

# THE STRENGTH OF TIMELESS TRUST



## **TATA AGRICO**

12th floor, Tata Centre, 43 Jawaharlal Neheru Road Kolkata 700 071, India  
Ph: 91 33 2224 8661/3475

[www.tataagrico.com](http://www.tataagrico.com) | [agricomarketplace@tatasteel.com](mailto:agricomarketplace@tatasteel.com)

 Join us on officialtataagrico  Follow us on officialtataagrico  Follow us on @Agricotata

 1800 108 8282 (Toll free)



**TATA AGRICO PRODUCT CATALOGUE**  
**VOLUME-IV**



### A Division of TATA STEEL

Caters high quality tools to farmers, labourers, tradesmen and rural consumers of the country at affordable prices.

Tata Agrico is the oldest brand of Tata Steel, launched in 1925, with a mission of contributing towards nation-building. Agriculture being the backbone of the economy at the time, it started with production of agricultural tools like Hoes, Crowbars, Sickles & Shovels and forayed into other products like Pickaxes and Hammers in subsequent years. Since then, Tata Agrico has been a pioneer in superior quality agricultural implements and has been the leading manufacturer of all hand-held implements catering to Agriculture & Infrastructure sectors.

Today, Agrico deals in a wide array of other products like Garden Tools, Files, General Purpose hand tools, Welding electrodes, Cutting wheels and Grinding wheels becoming a one-stop solution for all agricultural and infrastructural needs.

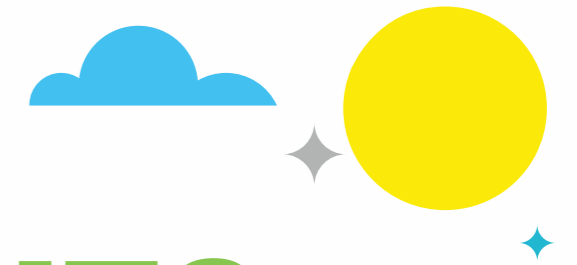
Tata Agrico lays extreme stress on quality processes and is ISO 9001:2015 certified, a testament to its commitment towards continuous improvement.

Tool of choice for various stakeholders (farmers, carpenters, welders etc) and various sectors The division is committed to operating responsibly with respect to the health, safety and well-being of all its stakeholders and the communities in which it operates. It is also committed to the sustainable management of the environment and of finite resources.



For more information visit us: [www.tataagrico.com](http://www.tataagrico.com)

# CONTENTS



## Agri & Construction Hand Tools and Agricultural Consumables ..... 02-11

Agri & Construction tools.....	02
Agri Consumables .....	10

## Trade Hand Tools ..... 14-43

Garden Tools .....	14
Steel Files .....	20
GPHT .....	24

## Industrial and Hardware Consumables ..... 46-52





**AGRI &  
CONSTRUCTION  
HAND TOOLS AND  
AGRICULTURAL  
CONSUMABLES**



**Fork Hoe: HSN - 82013000**

Item	Code	Weight (Kg)	Std.-Pkg
Fork Powrah 1.6	HOE001	1.6	20



**Agri Hoe: HSN - 82013000**

Item	Code	Weight (Kg)	Std.-Pkg
Agri 3	HOE002	1.05	20
Agri 4	HOE003	1.4	20
Agri 5	HOE004	1.6	20
Agri 6	HOE005	1.8	20
Nepal Agri	HOE040	1.6	20
AG3 Burmese	HOE061	0.85	20



- Product made from virgin quality steel manufactured through BF-BOF-LF-CC process
- Product quality conforming to IS Standard for Powrah
- Weight tolerance always on positive side
- Blade profile perfected in a way to provide maximum shifting of material
- Superior quality of painted surface ensures longer product life

**East India Hoe: HSN - 82013000**

Item	Code	Weight (Kg)	Std.-Pkg
East India	HOE006	1.8	20
Powrah - East India Smaller	HOE058	1.6	20



**West India Hoe: HSN - 82013000**

Item	Code	Weight (Kg)	Std.-Pkg
West India	HOE043	1.25	20
West India	HOE007	1.6	20

\*Technical specifications as per BIS Standard

**Bombay Hoe: HSN - 82013000**

Item	Code	Weight (Kg)	Std.-Pkg
Bombay 5	HOE077	0.83	20
Bombay 7	HOE009	1.2	20
Bombay 8	HOE010	1.4	20
Lanka Hoe	HOE011	1.25	20
Bombay 12	HOE017	1.8	20
Agrilite	HOE042	1	20



**Mysore Mamooty: HSN - 82013000**

Item	Code	Weight (Kg)	Std.-Pkg
Mysore Mamooty (Orange)	HOE055	1.4	10
Mysore Mamooty (Gold)	HOE035	1.4	10



- Product made from virgin quality steel manufactured through BF-BOF-LF-CC process
- Product quality conforming to IS Standard for Powrah
- Weight tolerance always on positive side
- Blade profile perfected in a way to provide maximum shifting of material
- Superior quality of painted surface ensures longer product life

**Swan Neck Mamooty: HSN - 82013000**

Item	Code	Weight (Kg)	Std.-Pkg
Swan Neck Mamooty	HOE013	1.45	10
Swan Neck Mamooty	HOE014	1.4	10



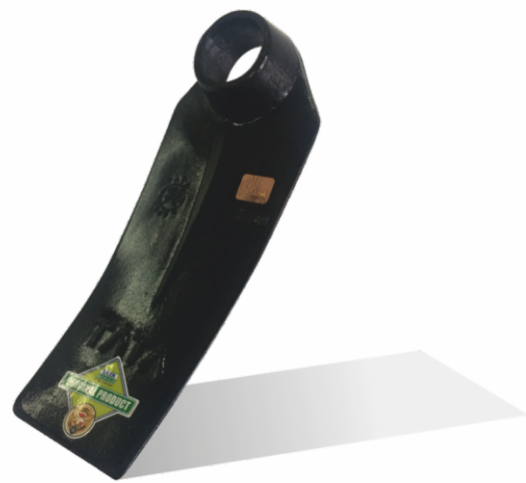
**Tanged Mamooty: HSN - 82013000**

Item	Code	Weight (Kg)	Std.-Pkg
Tanged Mamooty 1.4	HOE024	1.4	10
Tanged Mamooty 1.6	HOE015	1.6	10

\*Technical specifications as per BIS Standard

**Button Head Mamooty: HSN - 82013000**

Item	Code	Weight (Kg)	Std.-Pkg
Button Head Mamooty	HOE016	1.8	20



**Kundali: HSN - 82013000**

Item	Code	Weight (Kg)	Std.-Pkg
Kundali 1.8	HOE041	1.8	20



**Potato Hoe: HSN - 82013000**

Item	Code	Weight (Kg)	Std.-Pkg
Potato Hoe	HOE060	0.85	20
Potato Hoe	HOE056	1.0	20



**TP Hoe: HSN - 82013000**

Item	Code	Weight (Kg)	Std.-Pkg
TP 4	HOE020	1.3	20
TP 5 Gold	HOE031	1.4	20
TP 11	HOE027	1.4	20
TP 6 Larg	HOE051	1.6	20
TP 3	HOE019	1.65	20
TP 5	HOE021	1.45	20
TP 6	HOE047	1.3	20
TP - GDN	HOE064	1.2	20

\*Technical specifications as per BIS Standard

**Integrated Hoe: HSN - 82013000**

Item	Code	Weight (Kg)	Std.-Pkg
Powrah - Integrated AG 3	HOE068	1.76	6
Powrah - Integrated AG 4	HOE074	2.11	6
Powrah - Integrated AG6	HOE069	2.51	6
Powrah - Integrated Nepal AG 6	HOE072	2.31	6
Powrah - Integrated East India 1.6	HOE075	2.31	6
Powrah - Integrated West India 3'	HOE076	2.31	6
Powrah - Integrated Agrilite 4'	HOE081	1.76	6
Powrah - Integrated SNM 1.45	HOE082	2	6
Powrah - Integrated West India 4'	HOE083	2.62	6
Powrah - Integrated AG3 Burmese	HOE084	1.56	6
Powrah - Integrated Potato Hoe (0.85kg)-3'	HOE085	1.56	6
Powrah - Integrated Potato Hoe (0.85kg)-4'	HOE086	1.87	6
Powrah - Integrated Agrilite New 3'	HOE088	1.67	6



**Powrah Handle: HSN - 82013000**

Item	Code	Weight (Kg)	Std.-Pkg
Powrah-PVC Handle 29"	HOE044	0.58	10
Powrah-PVC Handle 30.5"	HOE045	0.76	10
Powrah-PVC Handle 35"	HOE059	0.95	10

**Chisel: HSN - 82053000**

Item	Code	Weight (Kg)	Std.-Pkg
22 x 325 mm	CHE001	0.46	12
25 x 325 mm	CHE002	0.46	12
29 x 325 mm	CHE003	0.46	12
32 x 225 mm	CHE004	0.46	12
22mm with point end tip	CHE005	0.46	12
22 x 152 mm	CHE007	0.46	12
22 x 228 mm	CHE008	0.69	12
25 x 152 mm	CHE009	0.60	12
25 x 228 mm	CHE010	0.90	12
29 x 152 mm	CHE011	0.80	12
29 x 228 mm	CHE012	1.17	12
32 x 152mm	CHE013	0.95	12



\*Technical specifications as per BIS Standard



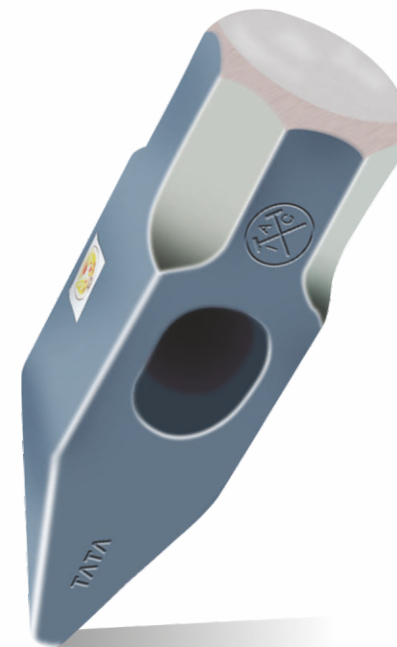


**Hammer: HSN - 82052000**  
(Stone Breaking)

Item	Code	Weight (Kg)	Std.-Pkg
SB-1	HMR014	0.45	24

**Hammer: HSN - 82052000**  
(Straight Pein)

Item	Code	Weight (Kg)	Std.-Pkg
SP-1.5-Round Hole	HMR026	0.68	24
SP-2-Round Hole	HMR027	0.91	24
SP-8-Oval Hole	HMR019	3.63	6
SP-8-Round Hole	HMR028	3.63	6
SP-10-Oval Hole	HMR018	4.54	6
SP-10-Round Hole	HMR022	4.54	6
SP-12-Oval Hole	HMR029	5.44	4
SP-12-Round Hole	HMR023	5.44	4
SP-14-Oval Hole	HMR030	6.35	4
SP-14-Round Hole	HMR024	6.35	4
SP-16-Oval Hole	HMR031	7.26	3
SP-16-Round Hole	HMR025	7.27	3
SP-18-Round Hole	HMR040	8.17	3
SP-20-Round Hole	HMR041	9.08	2
SP-12-RH-Rajasthan Model	HMR043	5.44	4
SP-14-RH-Rajasthan Model	HMR044	6.35	4



**Hammer: HSN - 82052000**  
(Double Face Sledge)

Item	Code	Weight (Kg)	Std.-Pkg
DFS - 1	HMR013	0.45	24
DFS - 1.5	HMR012	0.68	24
DFS - 2	HMR011	0.91	24
DFS - 2.5	HMR010	1.13	18
DFS - 3	HMR009	1.36	18
DFS - 4	HMR008	1.81	12
DFS - 5	HMR007	2.27	10
DFS - 6	HMR006	2.72	9
DFS - 8	HMR005	3.63	6
DFS - 10	HMR004	4.54	6
DFS - 12	HMR003	5.44	4
DFS - 14	HMR002	6.35	4
DFS - 16	HMR001	7.26	3
DFS - 18	HMR020	8.17	3
DFS - 20	HMR021	9.08	2

\*Technical specifications as per BIS Standard

**Pick Axe: HSN - 82013000**  
(with double point ends)

Item	Code	Weight (Kg)	Std.-Pkg
8DP	PKX006	1.4	10
10DP	PKX008	1.8	10
11DP	PKX001	2.2	10
12DP	PKX002	2.5	10
14DP	PKX004	3	10



**Pick Axe: HSN - 82013000**  
(with chisel and point ends)

Item	Code	Weight (Kg)	Std.-Pkg
Pick Axe - 9CP	PKX018	1.6	10
Pick Axe - 10CP	PKX003	1.8	10
Pick Axe - 11CP	PKX005	2.2	10
Pick Axe - 12CP	PKX007	2.5	10
Pick Axe - 14CP	PKX009	3	10
Pick Axe - 14CP SUPER	PKX0016	3.2	10
Pick Axe - 16CP	PKX0013	4	10
Pick Mattock - 4Lbs	PKX022	1.80	10



**Pickaxe Handle: HSN - 82013000**

Item	Code	Weight (Kg)	Std.-Pkg
Pickaxe PVC Handle 30.5"	PKX015	0.79	10
Steel Pickaxe Handle (35")	PKX019	1	10



**Round Shovel: HSN - 82011000**

Item	Code	Weight (Kg)	Std.-Pkg
RD 2 Steel Handle	SVL011	2	6
RD 2 Wooden Handle	SVL001	2.1	6
RD 4 Steel Handle	SVL012	2.35	6
RD 4 Wooden Handle	SVL002	2.45	6



**Square Shovel: HSN - 82011000**

Item	Code	Weight (Kg)	Std.-Pkg
SQ 4 Without Handle	SVL016	1.8	6
SQ 4 Wooden Handle	SVL004	2.65	6
SQ 4 Steel Handle	SVL008	2.55	6
SQ 4 Bend Shoulder	SVL013	2.65	6
SQ 4 Bend Shoulder with Steel Handle	SVL018	2.55	6
SQ 6 Wooden Handle	SVL005	2.85	6
SQ 6 Steel Handle	SVL009	2.75	6
SQ 6 Bend Shoulder - PVC Handle	SVL019	2.96	6



\*Technical specifications as per BIS Standard





**Shovel: HSN - 82011000**  
(Integrated)

Item	Code	Weight (Kg)	Std.-Pkg
SQ 4 Integrated Steel - Matt	SVL030	2.45	6
SQ 4 Integrated Steel Bend - Matt	SVL031	2.45	6

**Shovel: HSN - 82011000**  
(Light Weight)

Item	Code	Weight (Kg)	Std.-Pkg
SQ 4 Light Wt - Wooden Handle	SVL022	2.23	6
SQ 4 Light Wt - Steel Handle	SVL023	2.16	6
RD 2 Light Wt - Steel Handle	SVL026	1.71	6
RD 4 Light Wt - Steel Handle	SVL025	2.04	6



**Scoop Crowbar: HSN - 82019000**

Item	Code	Weight (Kg)	Std.-Pkg
Scoop Crowbar 25mm	CWB027	3.6	5

**Crowbar: HSN - 82019000**

Item	Code	Weight (Kg)	Std.-Pkg
22mm - 5.5'	CWB001	5.1	6
22mm - 5.5'	CWB002	6.7	5
29mm - 5.5'	CWB003	8.5	4
32mm - 5.5'	CWB004	10.5	3
25mm long chisel end	CWB028	6.7	8
22mm - 4'	CWB014	3.7	5
25mm - 4'	CWB015	4.9	4
29mm - 4'	CWB016	6.2	3
32mm - 4'	CWB018	7.6	12
22mm - 33"	CWB022	2.55	5
5mm - 33"	CWB023	3.35	4
29mm - 33"	CWB024	4.25	3
32mm - 33"	CWB025	5.22	5



**Axe: HSN - 82014000**

Item	Code	Weight (Kg)	Std.-Pkg
AXE	AXE001	0.9	12
AXE	AXE003	1.4	10
AXE	AXE006	0.5	20



- Product quality conforming to IS Standard for Crowbars & clawbars
- Sharpened chisel end for superior cutting performance
- Straightness of bars ensured for ease of work
- Non working edge is chamfered for superior finish quality and ease of use

\*Technical specifications as per BIS Standard

**Sickle:**  
HSN - 82019000

Item	Code	Weight	Std.-Pkg	Item	Code	Weight	Std.-Pkg
Sickle-102 BT (Wooden Handle)	SIC002	0.22	20	Sickle-102 BT (Plastic Handle)	SIC021	0.23	20
Sickle-104 BT (Wooden Handle)	SIC004	0.22	20	Sickle-104 BT (Plastic Handle)	SIC022	0.23	20
Sickle-105 BT (Wooden Handle)	SIC005	0.19	20	Sickle-105 BT (Plastic Handle)	SIC023	0.21	20
Sickle-105 TT (Wooden Handle)	SIC006	0.19	20	Sickle-105 TT (Plastic Handle)	SIC024	0.21	20
Sickle-107 BT (Wooden Handle)	SIC007	0.21	20	Sickle-107 BT (Plastic Handle)	SIC025	0.22	20
Sickle-108 BT (Wooden Handle)	SIC008	0.21	20	Sickle-108 BT (Plastic Handle)	SIC026	0.22	20
SIC-108 TT (Wooden Handle)	SIC010	0.21	20	Sickle-108 TT (Plastic Handle)	SIC028	0.22	20



Model No	102	104	105	107	108
Weight (gms.)	153	153	127	142	142
Length (mm)	195	180	156	185	140
Width W1 (mm)	125	82	75	80	110
Width W2 (mm)	20	26	28	26	25

\*Technical specifications as per BIS Standard



## AGRI CONSUMABLES

### Tiller Shoe: HSN - 84321090

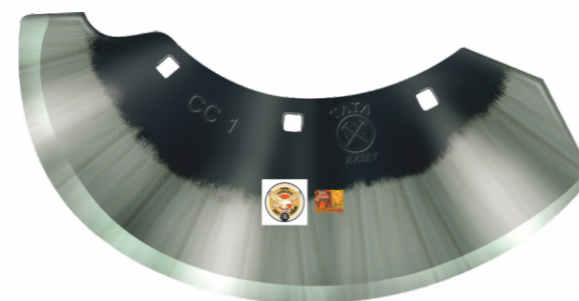
	Code	Length (mm)	Width (mm) at Centre	Thickness	Weight (Kg)	Std.-Pkg
Three hole	TLS001	310	60	6	0.65	9
	TLS002	310	60	8	0.85	9
	TLS006	385	60	8	1.4	9
Four hole	TLS007	385	60	8	1.4	9
Two hole	TLS003	266	60	8	0.7	9
Three hole	TLS009	310	60	8	0.85	9



- Tiller Shoe 8 CS3 – Branded as TATA Prime
- SAP material Code – TLS009
- Powder Coating Finish
- Better aesthetics & precisely chamfered edges
- In MOQ of 9 pcs suitably bolted at centre for easy handling

### Chaff Cutter: HSN - 84369900

Item	Code	Weight (Kg)	Std.-Pkg
Chaf Cutter	CFC001	0.9	50
Chaf Cutter	CFC002	1.0	50
Chaf Cutter	CFC003	0.9	50



- Ease of use
- Excellent sharpness at Edge – Long Lasting
- Light in weight
- Hardened & tempered for superior quality
- Rust proof coating
- Manufactured from Steel Sheet thickness 2.55 mm min
- Value for Money



### Rotary Tiller Blade: HSN - 84322910

Item	Code	Weight (Kg)	Hole Diameter (mm)	Hole Centre Distance (mm)	Material	Finish	Std.-Pkg
RT Blade	RVB002	0.9	11.5	57	SUP 6 / Boron Steel	Powder Coating	18 Pcs / Box
RT Blade	RVB006	0.9	14.5	57	SUP 6 / Boron Steel	Powder Coating	18 Pcs / Box
RT Blade	RVB003	0.9	14.5	46	SUP 6 / Boron Steel	Powder Coating	18 Pcs / Box



- Made from Boron Steel Material
- Suitable for any Rotavator Model
- Available in 3 variants
  - 14.5 X 57 mm (Dia X Hole Distance)
  - 11.5 X 57 mm
  - 14.5 X 46 mm
- High Quality Finish with Powder Coating





# TRADE HAND TOOLS



## GARDEN TOOLS



**Pruning Secateur: HSN - 82016000**  
(with Dip Sleeve)

Item	Code	Weight (Kg)	Std.-Pkg
Pruning Secateur	GTS002	0.35	10

- Cutting Capacity 12mm Diameter
- Anvil Made of EN42J Hardened and Tempered for Long Lasting Performance – Ensures Taper cut
- Robust Comfortable Easy Grip Handles in Bright Yellow for Maximum Visibility in Garden
- Fully Hardened and Tempered Blade made of EN42J Material for Long Lasting Sharpness
- Ideal for Pruning of Fruit Tree Stems and for Professional cutting in Orchards
- Used for growth of plants

**Roll Secatuer: HSN - 82015000**  
(Roll Cut)

Item	Code	Weight (Kg)	Std.-Pkg
Roll Cut	GTS003	0.37	10

- Cutting Capacity 12mm Diameter – Clean & accurate Cut
- Anvil Made of Brass to protect the stem from Bacteria after cutting – Anvil Ensures 90 deg straight cut
- Robust Comfortable Easy Grip Handles in Bright Yellow for Maximum Visibility in Garden
- Fully Hardened and Tempered Blade made of EN42J Material for Long Lasting Sharpness
- Ideal for Pruning of Flowers and Shrubs - where growth is not required



**Hedge Shear: HSN - 82016000**

Item	Code	Weight (Kg)	Std.-Pkg
Hedge Shear	GTS007	1.28	25

- Designed for Working in Gardening and Horticulture Sectors
- High Carbon EN42J Material used for Blades for better Performance
- Working Edge Sharpened for Superior results
- Wooden Handles for better grip and working comfort
- Adjustable tension Knob for Excellent Cutting Results
- Blade Size 8 inches & weight 1.140 kgs
- Blade are hardened and temperd for Long Life working



**Garden Rake: HSN - 82015000**

(With 12 Teeth)

Item	Code	Weight (Kg)	Std.-Pkg
Garden Rake	GTS009	1.5	10

- Manufactured from Prime Steel
- 12 Teeth head fixed with tublar handle
- Black Colour Powder Coated for Better Life
- Plastic Handle for Better Grip ( TATA Embossed)
- Handle length – 1260 mm



**Bill Hook: HSN - 82014000**

Item	Code	Weight (Kg)	Std.-Pkg
Bill Hook	GTS0010	0.7	25

- Designed for working in Agriculture specially for Sugar Cane Crop
- High Carbon C80/EN42J Material used for better performance
- Working Edge Sharpened for Superior Results
- Self Finish
- Working Edge hardened and tempered for Long Life
- Ergonomically designed for Accurate and easy Cut
- Working length – 300 mm & weight – 0.600 kgs



**Cane Chopper: HSN - 82015000**

Item	Code	Weight (Kg)	Std.-Pkg
Cane Chopper (13.5 inch)	GTS0011	0.6	25
Small Cane Chopper (10 inch)	GTS0108	-	25

- Made of C-60 steel gives clean cut
- Harden Steel strip with Rivetted wooden handle for better Gripping
- Light weight & easy to handle
- 1st choice in sugarcane cutting



**Khurpi - 1": HSN - 82015000**

(with PVC Handle)

Item	Code	Weight (Kg)	Std.-Pkg
Khurpi	GTS0014	0.5	50

- Designed For Working in Gardening, Agriculture and Horticulture Sector
- Powder Coated Blade with Tublar Handle covered with Plastic Grip for Comfort.
- Working Edge is Sharpened for Superior result.
- Working Edge is also Hardened and Tempered
- Working Range ranges from 25.4 mm - 127 mm
- Weight ranges from 224 – 406 grams



**Khurpi - 2": HSN - 82015000**

(with PVC Handle)

Item	Code	Weight (Kg)	Std.-Pkg
Kurpi	GTS0015	0.5	50

- Designed For Working in Gardening, Agriculture and Horticulture Sector
- Powder Coated Blade with Tublar Handle covered with Plastic Grip for Comfort.
- Working Edge is Sharpened for Superior result.
- Working Edge is also Hardened and Tempered
- Working Range ranges from 25.4 mm - 127 mm
- Weight ranges from 224 – 406 grams

**Khurpi - 3": HSN - 82015000**

(with PVC Handle)

Item	Code	Weight (Kg)	Std.-Pkg
Kurpi	GTS0016	0.5	50



**Khurpi - 5": HSN - 82015000**

(with Wooden Handle)

Item	Code	Weight (Kg)	Std.-Pkg
Kurpi	GTS0017	0.5	50



**Fork Powrah FP-1.0: HSN - 82015000**

Item	Code	Std.-Pkg
Fork Powrah 1.0	GTS061	20



- Made of FE-410 Mild Steel Material.
- Powder Coating Finish.
- Blades tapered upwards for optimum results.
- Tapered round Eye for firm handle grip.



**Lopper : HSN - 82015000**

Item	Code	Weight (Kg)	Std.-Pkg
Lopper	GTS100	1.5	10

- For Pruning purpose at higher branches
- Easy for pruning up to 1" dia stems
- Blades are hardened & tempered with black oxide coating for rust prevention

**Hoe Trowel: HSN - 82015000**

(with 12" Handle)

Item	Code	Weight (Kg)	Std.-Pkg
Hoe Trowel with 12" Handle	GTS101	0.61	25

- Trowel is used for transplanting purpose
- Hardened in tip for better cutting
- PVC grip for easy & comfortable working



**Hoe Fork: HSN - 82015000**

(with 12" Handle)

Item	Code	Weight (Kg)	Std.-Pkg
Hoe Fork with 12" Handle	GTS102	0.58	25

- Hoe fork is used for digging in Vegetable plantation
- Hardened in tip for better cutting
- PVC grip for easy & comfortable working



**Bonsai Kit: HSN-82015000**

Item	Code	Weight (Kg)	Std.-Pkg
Bonsai Kit	GTS104	0.22	20

- Finds use in home garden & orchards for development of Bonsai plants
- Consists of Big & Small Trowel , Rake & Bonsai Cutter
- Small size of tools to handle bonsai plants with care



**Digging Trowel: HSN-82014000**

Item	Code	Weight (Kg)	Std.-Pkg
Digging Trowel	GTS075	0.2	100

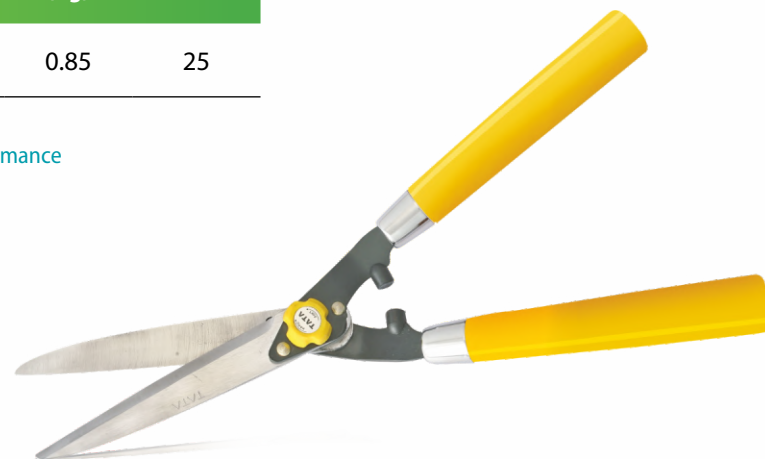
- Epoxy powder coating for rust prevention
- Steel handle with comfortable PVC Soft grip for extra hours of working without fatigue
- Hardened steel blade for better performance and durability

**Hedge Shear-10": HSN - 82016000**

(Plastic Handle)

Item	Code	Total Length (mm)	Blade Size (mm)	Weight (Kg)	Std.-Pkg
Hedge Shear - 10" - Plastic Handle	GTS071	580	280	0.85	25

- Designed for Working in Gardening and Horticulture Sectors
- High Carbon EN42J Material used for Blades for better Performance
- Working Edge Sharpened for Superior results
- Wooden Handles for better grip and working comfort
- Adjustable tension Knob for Excellent Cutting Results
- Blade Size 8 inches & weight 1.140 kgs
- Blade are hardened and tempered for Long Life



**Hand Cultivator: HSN - 82014000**

Item	Code	Weight (Kg)	Std.-Pkg
Hand Cultivator	GTS077	0.18	100

- Epoxy powder coating for rust prevention
- Steel handle with comfortable PVC Soft grip for extra hours of working without fatigue
- Hardened steel blade for better performance and durability



**Garden Tools: HSN - 82015000**

(4 Pcs. Set)

Item	Code	Weight (Kg)	Std.-Pkg
Garden Tools - 4 Pcs. Set	GTS092	1.1	20

- Hardened steel blade for better performance and durability.
- Steel handle with comfortable PVC Soft grip for extra hours of working without fatigue.
- Hardened and tempered high carbon steel blades with rust preventive coating.
- Epoxy powder coating for rust prevention.
- Safety lock in Secateurs.

**Digging Transplanter: HSN - 82015000**

Item	Code	Weight (Kg)	Std.-Pkg
Digging Transplanter	GTS074	0.225	100



**Weeding Fork : HSN - 82014000**

Item	Code	Weight (Kg)	Std.-Pkg
Weeding Fork	GTS076	0.2	50

- Hardened steel blade for better performance and durability.
- Steel handle with comfortable PVC Soft grip for extra hours of working without fatigue.
- Hardened and tempered high carbon steel blades with rust preventive coating.

## FILES

### Flat Bastard: HSN - 82031000

Item Code	Length (mm)	Length (inch)	Shape	Teeth per Inch	Std. Pkg
FIL020	200	8	Rectangle	24 - 25	10
FIL001	250	10	Rectangle	21 - 22	10
FIL014	300	12	Rectangle	15 - 16	05



### Super Light Bastard: HSN - 82031000

Item Code	Length (mm)	Length (inch)	Shape	Teeth per Inch	Std. Pkg
FIL003	250	10	Rectangle	16.5 - 17	10



- Hard Teeth : Faster and Superior material removal with minimum efforts
- High Quality Steel- Built stronger to last longer

### Super Light 2nd Cut: HSN - 82031000

Item Code	Length (mm)	Length (inch)	Shape	Teeth per Inch	Std. Pkg
FIL004	250	10	Rectangle	29 - 30	10



### Mill Bastard: HSN - 82031000

Item Code	Length (mm)	Length (inch)	Shape	Teeth per Inch	Std. Pkg
FIL002	250	10	Rectangle	33 - 34	10
FIL057	300	12	Rectangle	30 - 31	05



### Handle 2nd Cut: HSN - 82031000

Item Code	Length (mm)	Length (inch)	Shape	Teeth per Inch	Std. Pkg
FIL006	250	10	Rectangle	28 - 29	10



### Slim Taper: HSN - 82031000

Item Code	Length (mm)	Length (inch)	Shape	Teeth per Inch	Std. Pkg
FIL007	100	4	Triangular	56 - 57	11
FIL008	125	5	Triangular	53 - 54	11
FIL009	150	6	Triangular	49 - 50	10



- Hard Teeth : Faster and Superior material removal with minimum efforts
- High Quality Steel- Built stronger to last longer

### Regular Taper: HSN - 82031000

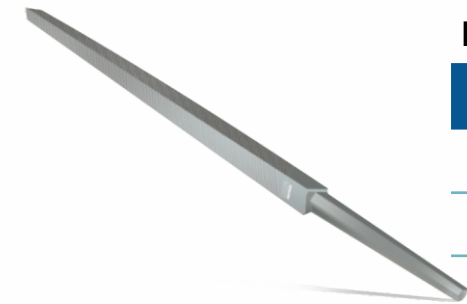
Item Code	Length (mm)	Length (inch)	Shape	Teeth per Inch	Std. Pkg
FIL010	100	4	Triangular	49 - 50	11
FIL011	150	6	Triangular	35 - 36	10
FIL015	125	5	Triangular	42 - 43	10



### Flat Handle Bastard: HSN - 82031000

Item Code	Length (mm)	Length (inch)	Shape	Teeth per Inch	Std. Pkg
FIL005	250	10	Rectangle	16 - 17	11





**Heavy Taper: HSN - 82031000**

Item Code	Length (mm)	Length (inch)	Shape	Teeth per Inch	Std. Pkg
FIL012	150	6	Triangle	40 - 41	11
FIL013	200	8	Triangle	31 - 32	11

**Pit Saw: HSN - 82031000**

Item Code	Length (mm)	Length (inch)	Shape	Teeth per Inch	Std. Pkg
FIL054	110	4 - 1/2	Half Round	47 - 48	10



- Hard Teeth : Faster and Superior material removal with minimum efforts
- High Quality Steel- Built stronger to last longer



**Feather Edge: HSN - 82031000**

Item Code	Length (mm)	Length (inch)	Shape	Teeth per Inch	Std. Pkg
FIL055	125	5	Rhombus	33 - 34	10
FIL056	150	6	Rhombus	33 - 34	05

**Files With Handle: HSN - 82031000**

Item Code	Length (mm)	Length (inch)	Shape	Teeth per Inch	Std. Pkg
FIL058	100	4	Slim Taper	58 - 59	10



**Flat Rough: HSN - 82031000**

Item Code	Length (mm)	Shape	Cut per Inch	Std. Pkg
FIL065	300	Rectangle	13-14	60



**ENGINEERING FILES**

**Flat Bastard: HSN- 82031000**

Item Code	Length (mm)	Length (inch)	Shape	Teeth per Inch	Std. Pkg
FIL018	150	6	Flat Bastard	30 - 31	10
FIL021	250	8	Flat Smooth	38 - 39	10



**Half Round Bastard: HSN - 82031000**

Item Code	Length (mm)	Length (inch)	Shape	Teeth per Inch	Std. Pkg
FIL026	150	6	Half Round	29 - 30	10
FIL031	250	10	Half Round	21 - 22	10
FIL032	300	12	Rectangle	17 - 18	05
FIL033	350	12	Half Round	16 - 17	05



- Hard Teeth : Faster and Superior material removal with minimum efforts
- High Quality Steel- Built stronger to last longer

**Round Bastard: HSN - 82031000**

Item Code	Length (mm)	Length (inch)	Shape	Teeth per Inch	Std. Pkg
FIL034	150	6	Round	28 - 29	10
FIL038	250	10	Round	20 - 21	10
FIL059	300	12	Round	23 - 24	05
FIL060	350	14	Round	16 - 17	05



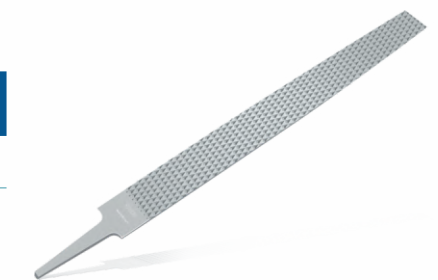
**Square Bastard: HSN - 82031000**

Item Code	Length (mm)	Length (inch)	Shape	Teeth per Inch	Std. Pkg
FIL061	150	6	Square	33 - 34	10
FIL044	250	10	Square	24 - 25	10
FIL045	300	12	Square	18 - 19	05



**Flat 2nd Cut: HSN - 82031000**

Item Code	Length (mm)	Length (inch)	Shape	Teeth per Inch	Std. Pkg
FIL062	250	10	Rectangle	29 - 30	10



## GENERAL PURPOSE HAND TOOLS

### Wire Stripper: HSN - 82034090

Item Code	Material Description	Std. Pkg
PWS005	5" Insulated	10



- Special steel grade EN 9 for longer tool life having machined & induction hardened cutting edge for better cutting experience
- Long life spring action for durability ; spring loaded locks for locking purpose when not in use (safety factor) & opening /adjustment when in use
- Sleeves made of PVC ensuring proper insulation & offers high protection to work
- Ergonomic design of handle makes it comfortable & convenient to hold while working on wires
- Utilized for Gripping, Twisting, Bending , Cutting, Looping & Removing Insulation from wires



### T Handle Allen Key: HSN - 82041110

Item Code	Material Description	Std. Pkg
TAK001	1.5, 2, 2.5, 3, 4, 5, 6, 8, 10 (mm)	Set of 9
AAK001	1.5, 2, 2.5, 3, 4, 5, 6, 8, 10 (mm)	Set of 9

### Tin Cutter: HSN - 82033000

Item Code	Material Description	Std. Pkg
TCS010	10" With Spring	04
TCS012	12" With Spring	04

- Drop forged from high quality carbon steel
- Heavy duty cutters having long lasting cutting edges for better performance
- Induction hardened cutting edges for longer life
- Cushion insulation for better & comfortable cutting experience
- Long & Straight cuts possible due to bigger & sturdy blade size
- Popular choice in industrial use



### Ball Point Hammer: HSN - 82052000

Item Code	Material Description	Std. Pkg
HMC001	200 gms	06
HMC002	300 gms	06
HMC003	500 gms	04
HMC004	800 gms	02



- Made of EN – 9 material
- Hardened & Tempered
- Kikkar wood handle
- Phosphate polished head
- Easy to grip handle
- Handle treated with Chrome Dipped Solution to prevent fungus & rust

### Claw Hammer: HSN - 82052000

Item Code	Material Description	Std. Pkg
HMC005	350 gms	04
HMC006	450 gms	04





**Cross Pein Hammer: HSN - 82052000**

Item Code	Material Description	Std. Pkg
HMC007	200 gms	04
HMC008	300 gms	04
HMC009	500 gms	04

- Made of EN – 9 material
- Hardened & Tempered
- Kikkar wood handle
- Phosphated head polished
- Easy to grip handle
- Handle treated with Chrome Dipped Solution to prevent fungus & rust

**Water Pump Plier: HSN - 82032000**

Item Code	Material Description	Std. Pkg
PLW001	07"	06
PLW002	10"	06
PLW003	12"	06
PLW004	16"	05

- Made of Forged Special selected steel C -50
- Full body Hardened for longer life
- Sleeve made of TPR (Thermo Plastic Rubber) Which can withstand temperature range of - 25 ° C to 70 ° C
- Certified for 1000 Volts application ( Marked on Pliers Sleeve)
- Clean cut of wires with lesser effort
- Double Dip sleeve handle with cushioned grips for extra comfort with superior abrasion resistance
- Hardened Rivets for superior performance & shelf life



**Long Nose Plier: HSN Code - 82032000**

Item Code	Material Description	Std. Pkg
PLN001	6"	06
PLN002	8"	06



**Combination Plier: HSN Code - 82032000**

Item Code	Material Description	Std. Pkg
PLC001	6"	06
PLC002	7"	06
PLC003	8" (PVC)	06
PLC004	8" (TPR)	06
PLC005	8" (ACETATE)	06
PLC006	7" (OFFSET)	06

**Bent Nose Plier: HSN Code - 82032000**

Item Code	Material Description	Std. Pkg
PLN003	6"	06
PLN004	8"	06



**MIG Welding Plier: HSN Code - 82032000**

Item Code	Material Description	Std. Pkg
PWS008	8"/200mm	40

**Tower Pincer: HSN - 82032000**

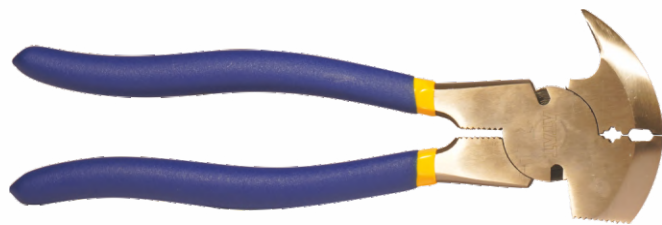
Item Code	Material Description	Std. Pkg
PLP001	9"	06
PLP002	10"	06
PLP003	12"	06
PLP004	14"	06

- Made of Forged Special selected steel C -50
- Full body Hardened for longer life
- Sleeve made of TPR (Thermo Plastic Rubber) Which can withstand temperature range of - 25 ° C to 70 ° C
- Certified for 1000 Volts application ( Marked on Pliers Sleeve
- Clean cut of wires with lesser effort
- Double Dip sleeve handle with cushioned grips for extra comfort with superior abrasion resistance
- Hardened Rivets for superior performance & shelf life



**Fencing Plier: HSN - 82032000**

Item Code	Material Description	Std. Pkg
PLF001	10.5"	06



**Circlip Plier: HSN - 82032000**

Item Code	Material Description	Std. Pkg
PLC011	7" External Straight	06
PLC012	7" External Bent	06
PLC013	7" Internal Straight	06
PLC014	7" Internal Bent	06



**Screw Driver - Flat Tip Striking: HSN - 82054000**

Item Code	Material Description	Std. Pkg
SFI001	3.25 X 150	20
SFI002	3.25 X 200	20
SFI003	4.5 X 100	20
SFI004	4.5 X 150	20
SFI005	5 X 100	20
SFI006	5 X 150	20
SFI007	5 X 200	20
SFI008	6 X 150	20
SFI009	8 X 200	10

- Handle made out of Virgin Acetate Cellulose material which is non inflammable, shockproof, oil /grease /chemical resistant ensuring enhanced life & superior performance
- Nickel chrome plated blades resisting rust and corrosion
- Hardened & Magnetic tips to lift small screws from confined spaces or to hold screws in position
- Steel collet ensuring easy changing of blades as per requirement
- Comes in attractive light weight plastic box which can be easily carried to various points of application



**Screw Driver - PHILLIPS: HSN - 2054000**

Item Code	Material Description	Std. Pkg
SDP011	2.5 X 50	20
SDP012	3.0 X 60	20
SDP013	3.0 X 150	20
SDP014	4.5 X 100	20
SDP015	5.0 X 200	20
SDP016	5.0 X 250	20
SDP017	6.0 X 150	20
SDP018	6.0 X 200	20
SDP019	8.0 X 200	10
SDP020	8.0 X 250	10



**Screw Driver - Set Of 8: HSN - 82054000**

Item Code	Material Description	Std. Pkg
SDK002	Set of 8 blades	05
SDK003	Set of 5 blades with Neon bulb	10

**Screw Driver - Two-In-One: HSN - 82054000**

Item Code	Material Description	Std. Pkg
SDT001	6.0 X 150 (Insulated)	20
SDT002	6.0 x 100	20
SDT003	6.0 X 250 (Insulated)	20
SDT004	5.0 X 200 (Both Phillips)	10
SDT005	8.0 X 200	10
SDY001	6 X 30	10
SDY002	6 X 50	10



**Screw Driver - Flat Tip Striking: HSN - 82054000**

Item Code	Material Description	Std. Pkg
SFS001	6 X 200	20
SFS002	8 X 200	10
SFS003	8 X 250	10
SFS004	8 X 300	10
SFS005	10 X 200	06
SFS006	10 X 300	06
SFS007	8 X 250 (Phillip Head)	10



**Screw Driver - Flat Tip: HSN - 82054000**

Item Code	Material Description	Std. Pkg
SDF015	2.5 X 50	20
SDF016	2.5 X 75	20
SDF017	2.5 X 100	20
SDF018	3.25 X 75	20
SDF019	4.5 X 75	20
SDF020	6 X 100	20
SDF021	6 X 150	20
SDF022	6 X 200	20
SDF023	8 X 175	10
SDF024	8 X 200	10
SDF025	8 X 250	10
SDF026	8 X 300	10
SDF027	10 X 200	06
SDF028	10 X 250	06
SDF029	10 X 300	06



**Screw Driver - Neon Bulb Tester: HSN - 82054000**

Item Code	Material Description	Std. Pkg
SDN001	125 MM (SMALL)	20
SDN002	200 MM	20

**Stillson Pipe Wrench: HSN - 82041120**

Item Code	Material Description	Std. Pkg
WRS001	8"	10
WRS002	10"	06
WRS003	12"	06
WRS004	14"	06
WRS005	18"	05
WRS006	24"	01



**Adjustable Wrench: HSN - 82041220**

Item Code	Material Description	Std. Pkg
WRA001	8"	06
WRA002	10"	06
WRA003	12"	06



**Adjustable Wrench - Rubber Sleeve : HSN - 82041220**

Item Code	Material Description	Std. Pkg
WRC001	C.P 8"	6
WRC002	C.P 10"	6
WRC003	C.P 12"	6
WRC004	C.P 15"	4
WRC005	C.P 18"	2
WRC006	C.P 24"	2
WRC007	C.P. 8" - Blister Packing	6
WRC008	C.P. 10" - Blister Packing	6



**T-Socket Spanner: HSN - 82041110**

Item Code	Material Description	Std. Pkg
TSP007	7 mm	60
TSP008	8 mm	60
TSP009	9 mm	60
TSP010	10 mm	60
TSP011	11 mm	60
TSP012	12 mm	60
TSP013	13 mm	60
TSP014	14 mm	60



**Cross Wheel Steel Spanner: HSN - 82041110**

Item Code	Material Description	Std. Pkg
SPA006	14" X 14 mm	01
SPA007	14" X 16 mm	01



**L-Socket Handle: HSN - 82041110**

Item Code	Material Description	Std. Pkg
LSH008	8" (200 mm) 1/2" Sq Drive	60
LSH010	10" (250 mm) 1/2" Sq Drive	60
LSH012	12" (300 mm) 1/2" Sq Drive	48
LSH018	18" (450 mm) 1/2" Sq Drive	24



**L-Spanner : HSN - 82041110**

Item Code	Material Description	Std. Pkg
SPA010	16 Dia Rod - 17	06
SPA011	16 Dia Rod - 18	06
SPA012	16 Dia Rod - 19	06
SPA013	16 Dia Rod - 21	06



**Wheel Spanner - Two Way: HSN - 82041110**

Item Code	Material Description	Std. Pkg
SPA001	24 X 27	01
SPA002	27 X 30	01
SPA003	30 X 32	01
SPA004	32 X 33	01
SPA014	27 X 27	01
SPA015	30 X 30	01
SPA016	32 X 32	01
SPA017	33 X 33	01
SPA020	27x32	-
SPA005	18 x 19 (Tommy Bar)	04



**Heavy Duty - Spanner: HSN - 82041110**

Item Code	Material Description	Std. Pkg
SPA018	19 - Heavy Duty	06
SPA019	21 - Heavy Duty	06

**D.O.E Spanner Set: HSN - 82041110**

Item Code	Material Description	Std. Pkg
SPD013	Set of 8 (Box Pkg)	10
SPD014	Set of 12 (Box Pkg)	05
SPD015	Set of 8 (Plastic Box Pkg)	04



**Combination Spanner Set: HSN - 82041110**

Item Code	Material Description	Std. Pkg
SPC013	Set of 8 (Box Pkg)	05
SPC014	Set of 12 (Box Pkg)	01
SPC015	Set of 8 (Plastic Pkg)	04



**Ring Spanner Set : HSN - 82041110**

Item Code	Material Description	Std. Pkg
SPR013	Set of 8 (Box Pkg)	05
SPR014	Set of 12 (Box Pkg)	02
SPR015	Set of 8 (Plastic Pkg)	04

**AUTO SPANNER**

- Made of EN – 8D Material
- Bright Chrome Plate Finish
- As per DIN Standard
- Full body Hardened
- Tested for Hardness , Torque , Gauge , Electroplating ( Nickel & Chrome)
- Salt Spray Tested for rust prevention





**D.O.E Spanner: HSN - 82041110**

Item Code	Material Description	Std. Pkg
SPD001	6 X 7	50
SPD002	8 X 9	50
SPD003	10 X 11	50
SPD004	12 X 13	50
SPD005	14 X 15	50
SPD006	16 X 17	50
SPD007	18 X 19	50
SPD008	20 X 22	50
SPD009	21 X 23	25
SPD010	24 X 27	25
SPD011	25 X 28	10
SPD012	30 X 32	10
SPD016	14 X 17	50
SPD017	19 X 22	25
SPD018	24 X 26	25
SPD019	32 X 36	05
SPD020	36 X 41	05
SPD021	41 X 46	04
SPD022	46 X 50	04

Item Code	Material Description	Std. Pkg
SPD023	3/16 X 1/4	50
SPD024	1/4 X 5/16	50
SPD025	5/16 X 7/16	50
SPD026	7/16 X 9/16	25
SPD027	1/2 X 9/16	25

- Made of Chrome Vanadium 31CrV 3 Steel with Mirror Finish
- Full body Hardened and Tempered
- Double Layer Chrome Plated / Mirror Finish
- As per DIN 3110 Standard

**Combination Spanner: HSN - 82041110**

Item Code	Material Description	Std. Pkg
SPC001	6	50
SPC017	7	50
SPC002	8	50
SPC018	9	50
SPC003	10	50
SPC019	11	50
SPC004	12	50
SPC020	13	50
SPC005	14	50
SPC021	15	25
SPC006	16	25
SPC022	17	25
SPC007	18	25
SPC023	19	25
SPC008	20	25
SPC024	21	25
SPC009	22	20
SPC025	23	20
SPC010	24	15



Item Code	Material Description	Std. Pkg
SPC026	25	15
SPC011	26	10
SPC027	27	10
SPC016	28	10
SPC028	29	10
SPC012	30	10
SPC029	31	10

- Made of Chrome Vanadium 31CrV 3 Steel with Mirror Finish
- Full body Hardened and Tempered
- Double Layer Chrome Plated / Mirror Finish
- As per DIN 3110 Standard



**Matt Spanner - DOE: HSN - 82041110**

Item Code	Material Description	Std. Pkg
SMD501	6 X 7	50
SMD502	8 X 9	50
SMD503	10 X 11	50
SMD504	12 X 13	50
SMD505	14 X 15	50
SMD506	16 X 17	50
SMD507	18 X 19	50
SMD508	20 X 22	50
SMD509	21 X 23	25
SMD510	24 X 27	25
SMD511	25 X 28	10
SMD512	30 X 32	10
SMD513	Set of 8 (Box Pkg)	10
SMD514	Set of 12 (Box Pkg)	05
SMD515	Set of 8 (Plastic Rack Pkg)	04
SMD516	14 X 17	50
SMD517	19 X 22	25
SMD518	24 X 26	25
SMD519	32 X 36	05



Item Code	Material Description	Std. Pkg
SMD520	36 X 41	05
SMD521	41 X 46	04
SMD522	46 X 50	04
SMD523	3/16 X 1/4	50
SMD524	1/4 X 5/16	50
SMD525	5/16 X 7/16	50
SMD526	7/16 X 9/16	25
SMD527	1/2 X 9/16	25

**MATT SPANNER**

- Spanners are Drop Forged from High Quality Chrome Vanadium Alloy Steel specially Heat Treated in the most advanced Heat Treatment Process
- All spanners are coated with thin transparent protective layer to give longer shelf life



**Matt Spanner - Ring: HSN - 82041110**

Item Code	Material Description	Std. Pkg
SMR501	6 X 7	50
SMR502	8 X 9	50
SMR503	10 X 11	50
SMR504	12 X 13	50
SMR505	14 X 15	50
SMR506	16 X 17	25
SMR507	18 X 19	25
SMR508	20 X 22	15
SMR509	21 X 23	10
SMR510	24 X 27	10
SMR511	25 X 28	10
SMR512	30 X 32	10
SMR513	Set of 8 (Box Pkg)	05
SMR514	Set of 12 (Box Pkg)	02
SMR515	Set of 8 (Plastic Box Pkg)	04
SMR516	14 X 17	25
SMR517	19 X 22	15
SMR518	24 X 26	10
SMR519	32 X 36	04



Item Code	Material Description	Std. Pkg
SMR520	36 X 41	04
SMR521	41 X 46	04
SMR522	46 X 50	04
SMR523	3/16 X 1/4	50
SMR524	1/4 X 5/16	50
SMR525	5/16 X 7/16	10
SMR526	7/16 X 9/16	10
SMR527	1/2 X 9/16	10

**MATT SPANNER**

- Spanners are Drop Forged from High Quality Chrome Vanadium Alloy Steel specially Heat Treated in the most advanced Heat Treatment Process
- All spanners are coated with thin transparent protective layer to give longer shelf life

**Ring Spanner: HSN Code - 82041110**

Item Code	Material Description	Std. Pkg
SPR001	6 X 7	50
SPR002	8 X 9	50
SPR003	10 X 11	50
SPR004	12 X 13	50
SPR005	14 X 15	50
SPR006	16 X 17	25
SPR007	18 X 19	25
SPR008	20 X 22	15
SPR009	21 X 23	10
SPR010	24 X 27	10
SPR011	25 X 28	10
SPR012	30 X 32	10
SPR016	14 X 17	25
SPR017	19 X 22	15
SPR018	24 X 26	10
SPR019	32 X 36	04
SPR020	36 X 41	04
SPR021	41 X 46	04



Item Code	Material Description	Std. Pkg
SPR022	46 X 50	04
SPR023	3/16 X 1/4	50
SPR024	1/4 X 5/16	50
SPR025	5/16 X 7/16	10
SPR026	7/16 X 9/16	10
SPR027	1/2 X 9/16	10

- Made of Chrome Vanadium 31CrV 3 Steel with Mirror Finish
- Full body Hardened and Tempered
- Double Layer Chrome Plated / Mirror Finish
- As per DIN 3110 Standard

**Grease Gun: HSN - 82055910**

Item Code	Material Description	Std. Pkg
GGN004	500 gms Lever Type - Rigid Extension	01
GGN005	500 gms Lever Type - Flexible Extension	01
GGN006	500 gms Lever Type - Rigid + Flexible Extension	01
GGN016	Duel Piston -500cc Rigid	01
GGN017	Duel Piston -650cc Rigid	01



- Designed for continuous operation
- Precision fit plungers and extra heavy follower springs
- Aluminium die casted head
- Comes with different types of extensions
- First choice of Mechanics & industry professional

**Grease Bucket : HSN - 82055910**

Item Code	Material Description	Std. Pkg	Rate/Unit (Rs)
GGN010	6 kg without wheel	01	4,770
GGN011	10 kg without wheel	01	5,300
GGN012	6 kg with wheel	01	5,300
GGN013	10 kg with wheel	01	5,830
GGN019	3 kg without wheel	01	4,417



**Socket - 1/2" Sq Hex Sockets and Socket Set: HSN- 82042000**

Item Code	Material Description	Std. Pkg
SCS001	Socket Set 24	01
SCS002	1/4" SD - 46 Pcs	01
SCH008	8 mm	10
SCH009	9 mm	10
SCH010	10 mm	10
SCH011	11 mm	10
SCH012	12 mm	10
SCH013	13 mm	10
SCH014	14 mm	10
SCH015	15 mm	10
SCH016	16 mm	10
SCH017	17 mm	10
SCH018	18 mm	10
SCH019	19 mm	10
SCH020	20 mm	10
SCH021	21 mm	10
SCH022	22 mm	10
SCH023	23 mm	10
SCH024	24 mm	10



Item Code	Material Description	Std. Pkg
SCH025	25 mm	10
SCH026	26 mm	10
SCH027	27 mm	05
SCH028	28 mm	05
SCH029	29 mm	05
SCH030	30 mm	05
SCH032	32 mm	05

**Lock Grip Pliers: HSN - 82032000**

Item Code	Material Description	Std. Pkg
LGP001	10"	6



**Socket Accessories: HSN - 82042000**

Item Code	Material Description	Std. Pkg
SCE002	125 mm - Extension Bar	05
SCE003	250 mm - Extension Bar	05
SCP021	21 mm - 1/2" Sq. Dr. Std. Hand Spark Plug Socket	10
SHR001	1/2" Dr. 72T Ratchet Handle	05
SHT001	250 mm Sliding T Bar	05
SUJ001	75 mm - Universal Joint	10



**NEW PRODUCTS LAUNCHED**

**Combination Spanner: HSN - 82041110**

Item Code	Material Description	Std. Pkg
CSK001	Set of 25	01
CSK002	(6 - 22) mm, Set of 12	01





**INDUSTRIAL AND  
HARDWARE  
CONSUMABLES**



**Abrasive Wheel - Cutting Wheel :**  
HSN - 68042210

Item Code	Material Description	Net Wt / Pc in kg	Std. Pkg
ACW401	4" x 1 mm	0.03	50
ACW501	5" x 1.2 mm	0.03	50
ACW703	7" x 3 mm	0.19	10
ACW143	14" x 3mm	0.63	25



**Abrasive Wheel - Grinding Wheel :**  
HSN - 68042210

Item Code	Material Description	Net Wt / Pc in kg	Std. Pkg
AGW404	4" x 4 mm	0.09	30
AGW 406	4" x 6 mm	0.11	25
AGW506	5" x 6 mm	0.18	15
AGW707	7" x 6.5 mm	0.39	10
AGW907	9" Grinding Wheel	-	12



**Abrasive Wheel - DIAMOND SAW BLADE :**  
HSN - 82022000

Item Code	Material Description	Std. Pkg
DBS400	4 inch -SEG	10
DSC400	4 inch -CON RIM	10
DST400	4 inch -Turbo	10
DBS500	5 inch -SEG	10
DSC500	5 inch -CON RIM	10



**Abrasive Wheel -TCT BLADE (Wood ply cut blade):** HSN - 82022000

Item Code	Material Description	Std. Pkg
TCT430	4 inch - 30 Teeth	10
TCT440	4 inch - 40 Teeth	10
TCT530	5 inch - 30 Teeth	10
TCT540	5 inch - 40 Teeth	10



**Abrasive Wheel - FLAP DISC - GRINDING & POLISHING :** HSN - 82022000

Item Code	Material Description	Std. Pkg
AFD436	100MM - Grits-36	10
AFD460	100MM - Grits-60	10
AFD480	100MM - Grits-80	10
AFD412	100MM - Grits-120	10

**Electrodes : Mild Steel Electrode - ISI**  
Electrode : HSN - 83111000

Item Code	Material Description	MOQ-Quantity in Master Box	Std. Pkg
MSE011	Tata - E6013 2.50 X 350 mm	12 Packets	125
MSE012	Tata - E6013 3.15 X 350 mm	12 Packets	90
MSE014	Tata - E6013 3.15 X 450 mm	12 Packets	90
MSE015	Tata - E6013 4.00 X 450 mm	12 Packets	60
MSE016	Tata - E6013 5.00 X 450 mm	12 Packets	40
MSE013	Tata - E6013NP 3.20 X 350 mm	4 Packets	155
MSE027	Tata - E6013NP 2.50 X 350 mm	4 Packets	265
MSE028	Tata - E6013NP 4.00 X 450 mm	4 Packets	85
MSE017	Tata - E6013 2.50 X 350 mm	8 Packets	125
MSE018	Tata - E6013 3.15 X 350 mm	8 Packets	90
MSE019	Tata - E6013 3.15 X 450 mm	8 Packets	90
MSE020	Tata - E6013 4.00 X 450 mm	8 Packets	60
MSE021	Tata - E6013 5.00 X 450 mm	8 Packets	40
MSE022	Tata - E6013JK 3.15 X 350 mm	12 Packets	85



Item Code	Material Description	MOQ-Quantity in Master Box	Std. Pkg
MSE026	Tata - E6013JK 4.00 X 450 mm	12 Packets	55
MSE023	Tata - E6013 <b>Bluebond</b> 2.50 X 350 mm	12 Packets	100
MSE024	Tata - E6013 <b>Bluebond</b> 3.15 X 450 mm	6 Packets	90
MSE025	Tata - E6013 <b>Bluebond</b> 4.00 X 450 mm	6 Packets	60
MSE029	TATA-E6013 JK 3.15X350	8 Packets	85
MSE030	TATA-E6013 JK 4.00X450	8 Packets	55





**Electrodes - Mild Steel Electrode - Non ISI**  
Grade : HSN - 83111000

Item Code	Material Description	MOQ-Quantity in Master Box	Std. Pkg
MNS001	Tata - NS E6013 2.50 X 350 mm	12 Packets	100
MNS002	Tata - NS E6013 2.90 X 350 mm	12 Packets	90
MNS003	Tata - NS E6013 2.90 X 450 mm	12 Packets	90
MNS004	Tata - NS E6013 3.75 X 450 mm	12 Packets	60
MNS005	TATA NS-E6013 2.70X350MM	12 Packets	90
MNS006	TATA NS-E6013 2.70X450 mm	12 Packets	90
MNS007	TATA NS-E6013 2.90X350 mm	8 Packets	90
MNS008	TATA NS-E6013 3.75X450 mm	8 Packets	60
MNS009	TATA NS-E6013 2.50X350 mm	8 Packets	100
MNS010	TATA NS-E6013 2.90X450 mm-	8 Packets	90
MNS009	TATA NS-E6013 2.50X350 mm	8 Packets	100
MNS010	TATA NS-E6013 2.90X450 mm-	8 Packets	90

**Electrodes - Low Hydrogen Carbon Steel**  
Electrode : HSN - 83111000

Item Code	Material Description	MOQ-Quantity in Master Box	Std. Pkg
LHE001	Tata - E7018 2.50 X 350 mm	4 Packets	168
LHE002	Tata - E7018 3.15 X 450 mm	4 Packets	115
LHE003	Tata - E7018 4.00 X 450 mm	4 Packets	75
LHE004	Tata - E7018 5.00 X 450 mm	4 Packets	50



**Electrodes - Stainless Steel Electrodes :**  
HSN - 83111000

Item Code	Material Description	MOQ-Quantity in Master Box	Std. Pkg
SSE001	Tata - SS308L 2.50 X 350 mm	5 Packets	84
SSE002	Tata - SS308L 3.15 X 350 mm	5 Packets	56
SSE003	Tata - SS308L 4.00 X 350 mm	5 Packets	38



**Self Drilling Screws (TS) - Grey**  
Russpart/ Teflon Coating | Outdoor/  
Roofing Application: HSN - 73181500

Item Code	Material Description	Std. Pkg
DSS001	SDS - SC - 10 - 16 X 19 mm	700
DSS002	SDS - SC - 12 - 14 X 25 mm	500
DSS003	SDS - SC - 12 - 14 X 35 mm	500
DSS004	SDS - SC - 12 - 14 X 45 mm	400
DSS005	SDS - SC - 12 - 14 X 55 mm	250
DSS006	SDS - SC - 12 - 14 X 65 mm	200



**Self Drilling Screws - Double Thread Grey**  
Russpart/ Teflon Coating | Outdoor/Roofing  
Application: HSN Code - 73181500

Item Code	Material Description	Std. Pkg
DSDT04	SDS-SC- DT-12-14X45 mm	400
DSDT05	SDS-SC- DT-12-14X55 mm	250
DSDT06	SDS-SC- DT-12-14X 65 mm	200
DSST01	SDS-SC-10-16X19MM-PT	-
DSSW01	SDS-SC-10 -16X19 MM-W14	400



**TATA AGRICO Carpentry Nails:**  
HSN - 73170013

Item Code	Material Description	Std. Pkg
TN0306	TATA-AG-NAIL-BOX-4030-2KG X 12	12
TN0406	TATA-AG-NAIL-BOX-0406-2KG X 12	12
TN0506	TATA-AG-NAIL-BOX-0506-2KG X 12	12
TN0606	TATA-AG-NAIL-BOX-0606-2KG X 12	12
TN1508	TATA-AG-NAIL-BOX-1508-2KG X 12	12
TN0208	TATA-AG-NAIL-BOX-0205.2KG X 12	12
TN2508	TATA-AG-NAIL-BOX-2508-2KG X 12	12
TN0308	TATA-AG-NA IL-BOX-03os.2KG X 12	12
TN0408	TATA-AG-NAIL-BOX-0408-2KG X 12	12
TN1509	TATA-AG-NAIL-BOX-1509-2KG X 12	12
TN0209	TATA-AG-NAIL-BOX-0209-2KG X 12	12
TN2509	TATA-AG-NAIL-BOX-2509-2KG X 12	12
TN0309	TATA-AG-NAIL-BOX-0309-2KG X 12	12
TN1510	TATA-AG-NAIL-BOX-1510.2KG X 12	12
TN02 10	TATA-AG-NAIL-BOX-0210.2KG X 12	12
TN2510	TATA-AG-NAIL-BOX-2510.2KG X 12	12
TN0310	TATA-AG-NAIL-BOX-0310.2KG X 12	12
TN1511	TATA-AG-NAIL-BOX-1511-2KG X 12	12
TN02 11	TATA-AG-NAIL-BOX-0211-2KG X 12	12
TN2511	TATA-AG-NAIL-BOX-2511-2KG X 12	12
TN0311	TATA-AG-NAIL-BOX-0311-2KG X 12	12
TN1512	TATA-AG-NAIL-BOX-1512-2KG X 12	12
TN0212	TATA-AG-NAIL-BOX-0212-2KG X 12	12
TN2512	TATA-AG-NAIL-BOX-2512-2KG X 12	12
TN0312	TATA-AG-NAIL-BOX-0312-2KG X 12	12



**TATA AGRICO Carpentry Nails(FINER SIZE NAILS):** HSN - 73170013

Item Code	Material Description	Std. Pkg
TN0113	TATA-AG-NAIL-0113-2KG X 12	20
TN1513	TATA-AG-NAIL-1513-2KG X 12	20
TN1713	TATA-AG-NAIL-1713-2KG X 12	20
TN0114	TATA-AG-NAIL-0114-2KG X 12	20
TN1514	TATA-AG-NAIL-1514-2KG X 12	20
TN0214	TATA-AG-NAIL-0214-2KG X 12	20
TN25 14	TATA-AG-NAIL-2514-2KG X 12	20
TN0314	TATA-AG-NAIL-0314-2KG X 12	20



**TATA AGRICO CONCRETE NAILS:** HSN - 73170013

Item Code	Material Description	Std. Pkg
CNB103	AGRICO-CON-NAIL-3.5X1"(25mm)	20
CNB154	AGRICO-CON-NAIL-4.0X1.5"(38mm)	20
CNB204	AGRICO-CON-NAIL-4.25X2"(50mm)	20
CNB254	AGRICO-CON-NAIL-4.25X2.5"(63mm)	20
CNB305	AGRICO-CON-NAIL-5 X 3.0"(75mm)	20



**TATA AGRICO DRY WALL SCREW**  
HSN - 73170013

Item Code	Material Description	Packing per Small box	No. of Small boxes per carton
ADW613	DWS - 6 X13 (17 TPI)	1000	20
ADW616	DWS - 6 X16 (17 TPI)	1000	20
ADW619	DWS - 6 X19 (17 TPI)	1000	20
ADW625	DWS - 6 X25 (17 TPI)	1000	20
ADW632	DWS - 6 X32 (17 TPI)	1000	20
ADW638	DWS - 6 X38 (17 TPI)	1000	20
ADW645	DWS - 6 X45 (17 TPI)	1000	20
ADW650	DWS - 6 X50 (17 TPI)	500	20
ADW660	DWS - 6 X60 (17 TPI)	500	20
ADW675	DWS - 6 X75 (17 TPI)	250	20



**STRENGTHENING**  
THE HANDS OF INDIA



**AGRI & CONSTRUCTION TOOLS**

# STRENGTHENING

THE HANDS OF INDIA



## TRADE HAND TOOLS



# STRENGTHENING

THE HANDS OF INDIA



## INDUSTRIAL & HARDWARE CONSUMABLES