



Araldite®

Roff®



**TILE &
STONE
SOLUTIONS**



INDEX



TILE & STONE ADHESIVE RANGE

Roff Masterfix	1
Roff Yogafix	1
Roff Extrofix Ultra	1
Roff Extrofix	2
Roff Vitrofix Ultra	2
Roff Vitrofix	2
Roff Non-Skid Adhesive (NSA)	3
Roff New Construction Tile Adhesive (NCA)	3
Roff Tile Bonder	3
Fevi Kwik 102	4
Fevi Kwik 203	4

GROUT RANGE

Roff Starlike	5
Roff Starlike Crystal	5
Roff Starlike Finishes	6
Roff Rainbow Tile Mate Epoxy	6
Roff Sparkles	7
Roff Rainbow Tile Mate (RTM)	7
Roff Rainbow Tile Mate Wide Additive	7

TILE CLEANER

Roff Cera Clean	8
-----------------	---

UNDER TILE WATERPROOFING RANGE

Roff Hyguard EX	8
Roff Bond Repair	9
Roff Supercrete	9

APPLICATION TOOLS RANGE

Roff

Roff Notch Trowel	10
Roff Rubber Mallet	10
Roff Spacers	10
Roff Grout Cutter/ Cleaner	11
Roff Grout Floater	11
Roff Suction Cup	11
Roff Tile Leveling System	12

TILE & STONE EPOXY ADHESIVE RANGE

Araldite

Araldite Standard	13
Araldite Klear 5	14
Araldite Klear 20	15
Araldite Klear 120	16
Araldite KLAD X	17
Araldite KLAD PRO	18

BACK SEALER

TENAX

Tenax Anti-Efflorescence	19
Tenax Stoneguard WB	19

GENERAL MASTICS COLORED

Tenax Solido & Liquido (White & Ivory)	19
--	----

GENERAL MASTICS TRANSPARENT

Tenax Solido Transparente	20
Tenax Thassos - Tropical	20
Tenax Resina T8	20

PREMIUM EPOXY MASTIC

TENAX

Tenax Elixo	21
-------------	----

COLORANTS

Tenax Universal Colour	21
Tenax Magic Tint	21

EPOXY RESIN

Tenax StoneFill	22
-----------------	----

TRANSPARENT RESIN

Tenax Resina 101	22
------------------	----

DENSIFIER

Tenax Durastone 200 & 800	23
---------------------------	----

POLISH/ POWDER POLISH

Tenax Marvel Shine Pro	23
Tenax Cera Fluida	23

TOP SEALER

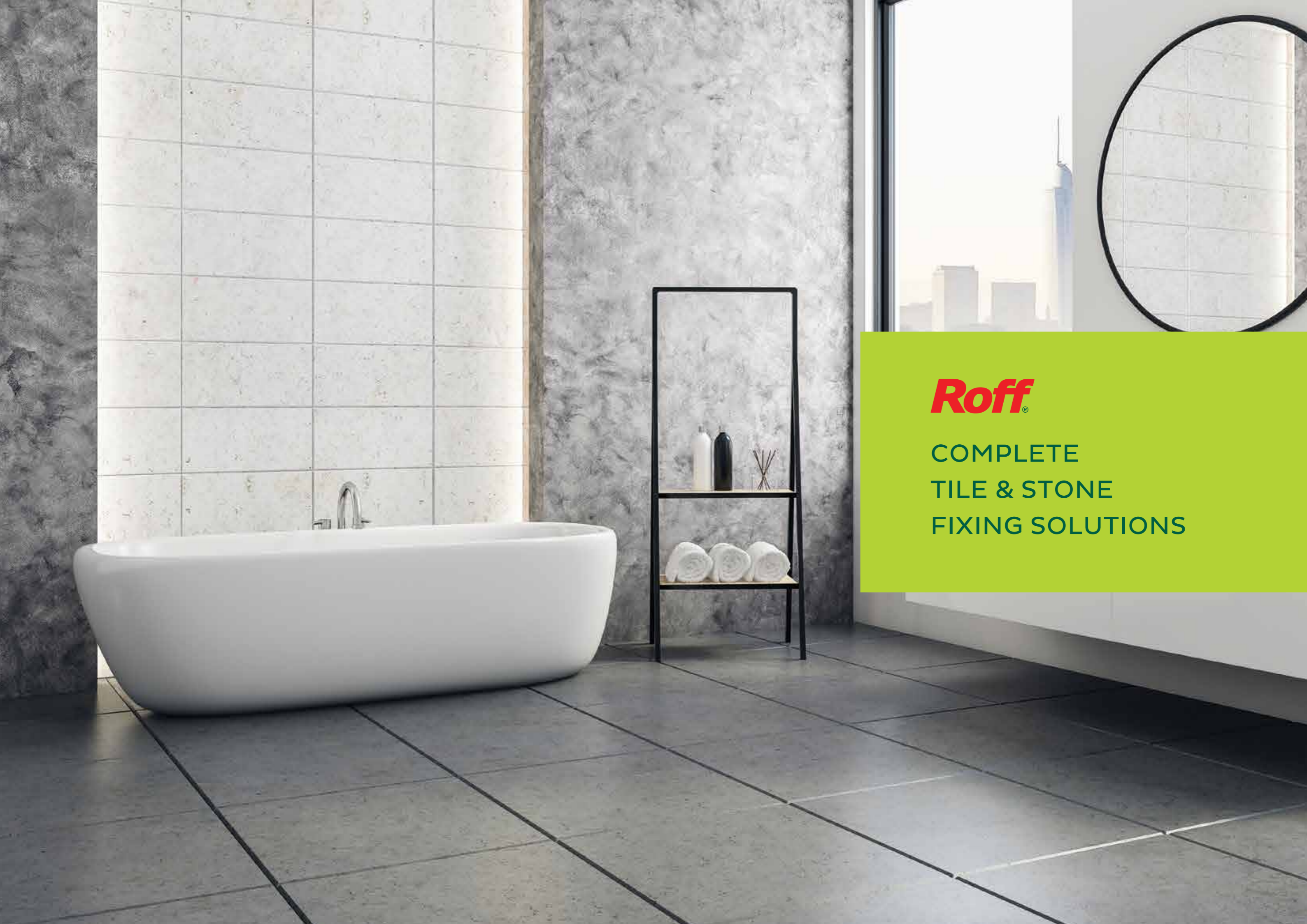
Tenax Skudo Universal Plus	24
Tenax Proseal	24
Tenax Hydrex	24

TOP SEALER + ENHANCER

Tenax Ager	25
Tenax Easywet	25

CLEANER

Tenax Brio Top	25
Tenax Bravo Sgrassatore	26
Tenax Bravo Disincrostante	26



Roff[®]

COMPLETE
TILE & STONE
FIXING SOLUTIONS

TILE & STONE ADHESIVE RANGE

Roff Masterfix

Highly flexible 2 component PU based thin set adhesive for fixing all kinds of tiles and stones including composites, engineered/nano stone, metal and glass tiles on interior and exterior floor and wall.

FEATURES

- Suitable for fixing tiles/stones over diverse critical cement-based substrate, metal substrates, epoxy/ PU based substrate, drywall boards, Rubber, PVC, plywood, wood derivative etc.
- High bond strength, flexible & heat resistant
- Chemical resistant & resistance to solvents, alkalis & oils



T29



PACKAGING UNITS	COLOUR	COVERAGE	SHELF LIFE
4 kg 8 kg	White	16 to 20 sq. ft./ 4 kg pack using 3 mm x 3 mm notch	24 months

Roff Yogafix

For fixing all types & sizes of vitrified tiles & natural stones in interior or exterior situations, especially those exposed higher deformations/ vibration like lift area, external cladding, metro stations etc.

FEATURES

- Highly flexible - > 5 mm deformation
- Very high initial grab
- High Open Time & adjustability
- High load bearing capacity.



T25

T26



PACKAGING UNITS	COLOUR	COVERAGE	SHELF LIFE
20 kg	Grey White	5 to 6 m ² / 20 kg bag at 3 mm bed thickness	12 months

Roff Extrofix Ultra

For fixing of fully vitrified tiles, large format tiles & natural stones in interior or exterior situations, especially those exposed permanently to external conditions or substrates subject to deformations or vibrations.

FEATURES

- A polymer enriched cementitious flexible tile adhesive
- Specially designed for external cladding
- Prolonged workability & non-slip
- High adhesive bond strength



T20

T21



PACKAGING UNITS	COLOUR	COVERAGE	SHELF LIFE
20 kg	Grey White	5 to 6 m ² / 20 kg bag at 3 mm bed thickness	12 months

For light and white coloured natural stones and glass mosaics tiles, use white variant.

TILE & STONE ADHESIVE RANGE

Roff Extrofix

For fixing all types of tiles, natural stones on external floors and walls exposed to external conditions subject to deformation/ vibrations.

FEATURES

- Extended open time
- High grab and non-sag
- Excellent bond strength
- Deformable/ Flexible



T07

T08



PACKAGING UNITS	COLOUR	COVERAGE	SHELF LIFE
20 kg	Grey White	5 to 6 m ² / 20 kg bag at 3 mm bed thickness	12 months

Roff Vitrofix Ultra

For fixing all sizes and types of tiles, natural stones and glass mosaics on internal floor, wall and external floor.

FEATURES

- Ready to use & needs only mixing with water
- Superior bond strength
- Superior grab
- Extended open time

Recommended for all applications like window, door frame & swimming pool.



T05

T06



PACKAGING UNITS	COLOUR	COVERAGE	SHELF LIFE
20 kg	Grey White	5 to 6 m ² / 20 kg bag at 3 mm bed thickness	12 months

Roff Vitrofix

For fixing any size vitrified tiles, natural stones and glass mosaics on internal floor & wall.

FEATURES

- Ready to use, needs only mixing with water
- Better workability
- High grab and non-sagging
- Excellent bond strength



T03

T04



PACKAGING UNITS	COLOUR	COVERAGE	SHELF LIFE
20 kg	Grey White	5 to 6 m ² / 20 kg bag at 3 mm bed thickness	12 months

For light and white coloured natural stones and glass mosaics tiles, use white variant.

TILE & STONE ADHESIVE RANGE

Roff Non-Skid Adhesive (NSA)

For fixing large size vitrified tiles & natural stones on floor & wall and tile-on-tile application for internal areas.

FEATURES

- Tile-on-tile application
- High bond strength
- Higher open time
- Easy mixing and application



PACKAGING UNITS	COLOUR	COVERAGE	SHELF LIFE
5 kg 20 kg 30 kg	Grey	5 to 6 m ² / 20 kg bag at 3 mm bed thickness	12 months
20 kg 50 kg	White	7.5 to 8 m ² / 30 kg bag at 3 mm bed thickness	



Roff New Construction Tile Adhesive (NCA)

Ideal for fixing high porosity tiles like ceramic tiles, terracotta and quarry tiles of regular size on both floor & wall for indoor application & small/regular size vitrified tiles on interior floor.

FEATURES

- Ready to use, needs no curing
- Saves time & increases productivity
- Excellent adhesion & low shrinkage
- Sag-resistant



PACKAGING UNITS	COLOUR	COVERAGE	SHELF LIFE
20 kg 30 kg	Grey	5 to 6 m ² / 20 kg bag at 3 mm bed thickness 7.5 to 8 m ² / 30 kg bag at 3 mm bed thickness	12 months



Roff Tile Bonder

A polymer additive which needs to be pre-mixed with cement/ cement & sand and then should be mixed with water for installing tiles and natural stones using the traditional cement slurry over freshly laid levelling bed/ machan.

FEATURES

- Easy to use & no special tools required
- Greatly increases pot life, open time & adjustability
- Improves adhesion & bond strength
- Economical solution for tile fixing



PACKAGING UNITS	COLOUR	COVERAGE	SHELF LIFE
300 g	White Powder	1 pouch of 300 g Roff Tile Bonder in 1 cement bag of 50 kg	12 months



Scan to know more about adhesive coverage



Scan to know more about adhesive selector

For light and white coloured natural stones and glass mosaics tiles, use white variant.

TILE & STONE ADHESIVE RANGE

Fevi Kwik 102

Low viscosity, fast-setting cyanoacrylate adhesive designed for tile, marble, and granite fixing. Regular strength makes it ideal for temporary applications, allowing for easy removal of tiles.

FEATURES

- Extra fast-setting (Sets within 5 secs)
- Regular strength
- Clear finish



PACKAGING UNITS	COLOUR	COVERAGE
20 g 50 g	Clear transparent	As per requirement

Fevi Kwik 203

Low viscosity, medium-setting, high-strength cyanoacrylate adhesive with a clear finish. Ideal for permanent fixing of tiles, marble, and granite. Its low blooming nature ensures a clear finish in signage applications. It is a multi-substrate multi-application product.

FEATURES

- Extra strength
- No blooming /Extra clear



PACKAGING UNITS	COLOUR	COVERAGE
20 g 50 g	Clear transparent	As per requirement

GROUT RANGE

Roff Starlike

Two component epoxy grout with patented quartz technology, applicable for interior and exterior environment due to its UV resistant tech, its chemical & stain resistant technology makes it best suited for residential and industrial spaces.

FEATURES

- Easy to mix & clean
- Stain & UV resistant
- Acid & chemical resistant
- Fills joints upto 1-15 mm
- More coverage



PACKAGING UNITS	COLOUR	COVERAGE	SHELF LIFE
1 kg 5 kg	24 Shades	Depends upon joint size	24 months

COVERAGE CHART*

Starlike Tile Grout Coverage in sq. ft./ kg													
Tile Dimension (mm)			Joint/ Grouting Width (mm)										
Length	Width	Thickness	2	3	4	5	6	8	10	12	13	14	15
450	300	6	110.7	73.8	55.3	44.3	36.9	27.7	22.1	18.4	17.0	15.8	14.8
600	300	6	123.0	82.0	61.5	49.2	41.0	30.7	24.6	20.5	18.9	17.6	16.4
600	600	8	138.3	92.2	69.2	55.3	46.1	34.6	27.7	23.1	21.3	19.8	18.4
800	800	8	184.5	123.0	92.2	73.8	61.5	46.1	36.9	30.7	28.4	26.4	24.6
1000	1000	10	184.5	123.0	92.2	73.8	61.5	46.1	36.9	30.7	28.4	26.4	24.6
1200	600	10	147.6	98.4	73.8	59.0	49.2	36.9	29.5	24.6	22.7	21.1	19.7
1200	800	10	177.1	118.1	88.5	70.8	59.0	44.3	35.4	29.5	27.2	25.3	23.6
1200	1200	12	184.5	123.0	92.2	73.8	61.5	46.1	36.9	30.7	28.4	26.4	24.6
1600	800	12	164.0	109.3	82.0	65.6	54.7	41.0	32.8	27.3	25.2	23.4	21.9
1800	1200	12	221.3	147.6	110.7	88.5	73.8	55.3	44.3	36.9	34.1	31.6	29.5

Note :

(1) This is theoretical coverage. (2) For sq. mtr./ kg coverage, divide mentioned coverage by 10.764.

*Know the material needed for your site.

Roff Starlike Crystal

Two-component acid-resistant translucent epoxy grout for grouting clear and artistic vitreous mosaics. Applicable for interiors and exteriors.

FEATURES

- Translucent
- Stain resistant
- UV resistant
- Chemical resistant



PACKAGING UNITS	COLOUR	COVERAGE	SHELF LIFE
1 kg 5 kg	-	Depends upon joint size	24 months

GROUT RANGE

Roff Starlike Finishes

This component has to be added to neutral shades to obtain metallic effects to enhance the look of tiles.

FEATURES

- Metallic shining effect
- UV & Stain resistant



PACKAGING UNITS	COLOUR	COVERAGE	SHELF LIFE
100g	Gold, Silver, Copper	Depends upon joint size	24 months

Roff Rainbow Tile Mate Epoxy

Resin based 3 component Epoxy joint filler. For filling tile joints of high traffic areas such as hospitals, factory floors & kitchen.

FEATURES

- Easy maintenance & smooth texture
- Provides excellent chemical resistant property
- Non-cracking & non-powdering
- High degree of resistance to abrasion and impact



PACKAGING UNITS	COLOUR	COVERAGE	SHELF LIFE
For 1 kg pack : 184 g Base + 78 g Hardener & 738 g Filler	27 Shades	Depends upon joint size. Refer to the coverage chart.	24 months
For 5 kg pack : 920 g Base + 390 g Hardener & 3690 g Filler			

COVERAGE CHART*

RTM Epoxy Tile Grout Coverage in sq. ft./ kg										
Tile Dimension (mm)			Joint/ Grouting Width (mm)							
Length	Width	Thickness	2	3	4	5	6	8	10	12
450	300	6	92.2	61.5	46.1	36.9	30.7	23.1	18.4	15.4
600	300	6	102.5	68.3	51.2	41.0	34.2	25.6	20.5	17.1
600	600	8	115.3	76.9	57.6	46.1	38.4	28.8	23.1	19.2
800	800	8	153.7	102.5	76.9	61.5	51.2	38.4	30.7	25.6
1000	1000	10	153.7	102.5	76.9	61.5	51.2	38.4	30.7	25.6
1200	600	10	123.0	82.0	61.5	49.2	41.0	30.7	24.6	20.5
1200	800	10	147.6	98.4	73.8	59.0	49.2	36.9	29.5	24.6
1200	1200	12	153.7	102.5	76.9	61.5	51.2	38.4	30.7	25.6
1600	800	12	136.6	91.1	68.3	54.7	45.5	34.2	27.3	22.8
1800	1200	12	184.5	123.0	92.2	73.8	61.5	46.1	36.9	30.7

Note :

(1) This is theoretical coverage. (2) For sq. mtr./ kg coverage, divide mentioned coverage by 10.764.

*Know the material needed for your site.

GROUT RANGE

Roff Sparkles

It is to be mixed with epoxy grout (Base + Hardener + Filler) to get special effect and enhance the beauty of the product. Specially designed filler mainly used to create particular special effects in epoxy tile grout.

FEATURES

- Easy to mix, apply & clean
- Enhance aesthetic look of tiles
- Stain free & easily cleanable with water (under fresh condition)



T28

PACKAGING UNITS	COLOUR	COVERAGE	SHELF LIFE
100g	Gold, Silver, Copper	3 - 7% of Roff RTM Epoxy (Base + Hardener + Filler)	24 months

Roff Rainbow Tile Mate

A water-resistant cementitious tile joint filler. For filling tile joints on floor & wall tiles. Fills joints upto 5 mm.

FEATURES

- High compressive, tensile & flexural strength
- Water-resistant property
- Easy to use and clean
- Firmly holds tiles together to give them longevity



T11

Note: Unitint & Piditint can be used with these shades.

PACKAGING UNITS	COLOUR	COVERAGE	SHELF LIFE
500g 1kg 10kg	18 Shades	Depends upon joint size	12 months

Roff Rainbow Tile Mate Additive

Additive for cementitious tile grout.

A liquid additive to be used with cementitious colour tile grouts to fill the tile joints of ceramic, vitrified tiles. RTM Wide Additive is used in place of water to improve the performance of RTM w.r.f. colour fastness, flexibility, waterproof & abrasion resistance.

FEATURES

- Improves water resistance
- Flexible joint filling



T14

PACKAGING UNITS	COLOUR	COVERAGE	SHELF LIFE
200ml 1Ltr	-	Depends upon joint size	12 months



Scan to know more about tile joint visualizer

TILE CLEANER

Roff Cera Clean

Cleaning of all types of floor and wall tiles. It is a high quality tile maintenance cleaner.

FEATURES

- Vitrified & ceramic tile cleaner
- Removes dirt & tough stains
- Safe on tiles



T16

*Whitish spot/ layer as normally observed in the bathroom under plastic/ metal buckets can be removed with ease.

PACKAGING UNITS	COLOUR	COVERAGE	SHELF LIFE
500 ml 1Ltr 5Ltr	Red	-	12 months

UNDER TILE WATERPROOFING RANGE

Roff Hyguard EX

Polymer modified cementitious flexible waterproof coating for basements, roof slabs, water retaining structures, sunken slabs, terrace slabs, water tanks, bathrooms, damp walls, foundations, etc. Bridges hairline cracks in concrete.

FEATURES

- Excellent adhesion, bonds to porous and non-porous surfaces
- Protects concrete against water penetration, chlorides and carbonation
- Can bridge hairline cracks
- Non-toxic & hence recommended for water tanks



C01

PACKAGING UNITS	COLOUR	COVERAGE	SHELF LIFE
9 kg	-	0.45-0.55 m ² / kg for 2 coats for total minimum thickness of 1 - 1.5 mm (DFT) approx. Depending upon the surface, the coverage will vary. To be protected by screed for best performance.	12 months

UNDER TILE WATERPROOFING RANGE

Roff Bond Repair

It is used as a bonding agent between old & new concrete, for cementitious substrates, waterproof coating to small areas in bathrooms, balconies & small roofs. It is also effective to make repair mortars & concrete in building rehab works.

SBR based bonding agent (Styrene Butadiene Rubber).

FEATURES

- Excellent adhesion to reinforcement & concrete
- Increases flexural strength & tensile strength of concrete & mortar
- Reduces shrinkage & water permeability in concrete & mortar
- Good as a bonding agent in repairs & renovations



PACKAGING UNITS	COLOUR	COVERAGE	SHELF LIFE
500 ml	White	As a passivator coat - 1 : 1 (RBR : Cement) Coverage : 2-3 Rmtr/ ltr for 25 mm dia bar at 1 mm thickness	18 months
1 Ltr		As a waterproof coating - 1 : 1.5 (RBR : Cement) Coverage : 1.5-2 m ² / ltr for 2 coats at 300 micron thickness	
5 Ltr		As bonding coat - 1 : 1 (RBR : Cement) Coverage : 2-3 m ² / ltr	

Roff Supercrete

It is a bonding agent for concrete repair and can be used as a patching mortar.

Acrylic polymer modifier for cementitious composites.

FEATURES

- Superlative bonding properties
- Can be used as a waterproof coating
- Static cracks can be filled with mortar made with Roff Supercrete
- Durable to UV exposure



PACKAGING UNITS	COLOUR	COVERAGE	SHELF LIFE
1 Ltr	White	As a waterproof coating - 1 : 2 (Supercrete : Cement) Coverage : 1.5-2 m ² / ltr. for 2 coats at 1 mm thickness	12 months
5 Ltr		Coverage would depend upon porosity of substrate	
20 Ltr			

APPLICATION TOOLS RANGE

Roff Notch Trowel

Tool for spreading adhesive evenly.

Stainless steel notch trowel with notches on two sides & having high wear resistance.

FEATURES

- Make tile fixing easy & perfect
- Proper levelling
- Adequate consumption
- Less time consumption & faster work



TYPE OF TROWEL	SIZE OF NOTCH	TA BED THICKNESS	WHEN/ WHERE TO USE
V-Notch	3 mm	1.5 mm - 2 mm	Swimming pool, smooth/ flat surface
Square Notch	6 mm	3 mm	Small size tile up to 2 ft.
U-Notch	10 mm	5 mm - 6 mm	Big size tile & high undulated surface

Roff Rubber Mallet

For pressing tiles or stones while fixing.

Hammer or mallet with rubber based head used for pressing the tile or stone for better adhesion or tile holding without any damage to tile or stone.

FEATURES

- Ensure proper adhesion of tile adhesive with tile
- Doesn't cause damage or any marks on tile and stone
- Light weight and hence easy to handle



MATERIAL	COLOUR	WHEN/ WHERE TO USE
Rubber	White head Black & green handle	Tap on tile or stone while fixing

Roff Spacers

For keeping gaps between tiles during tile fixing.

Enables the floor or wall tiles to have straight and even grout spacing.

FEATURES

- To keep the tiles at equal distance & create even grout lines
- Ensure tiles' uniformity & enhance design
- Ability to change individual tiles without damaging adjacent tiles
- Less effort & time with smoother installation



AVAILABLE SIZES	COLOUR	WHEN/ WHERE TO USE
2, 3, 4 & 5 mm	Green	Between the tiles

APPLICATION TOOLS RANGE

Roff Grout Cutter/ Cleaner

For cleaning the gap between the tiles or stones.

Tool with narrow & strong metal head which removes the dirt or impurities from the grouting gap without damaging the tile edges.

FEATURES

- Convenient to hold and easy to handle
- Effective gap cleaning
- Easy to handle hence chances of damages is less
- Great labour & time saving



TYPE	COLOUR	WHEN/ WHERE TO USE
Twin Blade (one blade can be removed for smaller gaps between tiles)	Metal head with green handle	Cleaning the gaps between the tiles Before grouting

Roff Grout Floater

For gap filling between the tiles & stones.

Grout floater with soft rubber base used to apply or spread the tile grout & fill the grouting gap effectively.

FEATURES

- No chance of scratches due to soft rubber
- Effective grouting on glass mosaic
- Very less material left hence less material wastage & easy to clean



TYPE	COLOUR	WHEN/ WHERE TO USE
Small Floater	Green rubber with Aluminium handle	Filling gaps between the tiles (small area)
Big Floater	Green rubber with plastic handle	Glass mosaic fixing, grout filling. Tile grout application (big area)

Roff Suction Cup

For lifting tile or stone upto 80 kg in weight.

Double suction cup for easy lifting and handling of large format tiles or stones reducing the chances of tile or stone damage and safety of the handler.

FEATURES

- Easy to lift heavy tiles and stones
- Less chances of tile or stone breakage
- Safe tool for the handler



MATERIAL	COLOUR	WHEN/ WHERE TO USE
Plastic	Green	To lift tile or stone upto 80 kg in weight

APPLICATION TOOLS RANGE

Roff Tile Leveling System

A tile leveling system to ensure the tiling stays lippage free and also prevents tiles or stones from moving while curing. It increases the installation speed. It also improves tile installation speed and reduces installer fatigue or stress.

FEATURES

- Virtually lippage free, flattens surface drastically
- Reusable wedges save your money
- Ensures consistent gap between two tiles or stones



Tile Leveling Plier

MATERIAL	COLOUR	WHEN/ WHERE TO USE
Base & Wedges - Plastic Plier - Plastic with SS material	Green	To level the tile or stone during application



Tile Leveling Base



Tile Leveling Wedge Caps



Scan to know more about application tools



Araldite[®]

VERSATILE
EPOXY ADHESIVE
SOLUTIONS

TILE & STONE EPOXY ADHESIVE RANGE

Araldite Standard

The Heavyweight Adhesive

Araldite® Standard is a two-component epoxy adhesive used to bond a variety of substrates. It is suitable for bonding a wide variety of metals, stone, wood, glass, ceramic, rubber, dry concrete, asbestos, cement & bison board, fabric, leather & most rigid plastics.

FEATURES

- High bond strength of 120 kg / sq.cm and load bearing capacity of 470+ Kg
- Highest coverage of 120 sq.ft./ 1.8 kg set
- Easy to mix
- Heat & Chemical Resistant

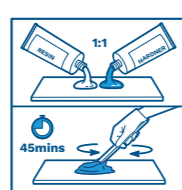
MORE DETAILS

- Compatible with Multiple Substrates
- Waterproof
- Highly Durable
- Pot life - 45 to 50 Mins
- Setting time - 6 to 7 Hrs
- Mixing Ratio by volume 1 : 1
- Colour: Pale Yellow

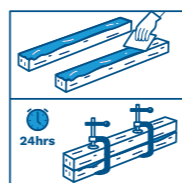
HOW TO APPLY



Roughen, degrease & dry surfaces to be bonded



Mix equal volume of Resin & Hardener; Use the mix within 45 minutes



Apply a thin layer on both surfaces and clamp joint overnight



AVAILABLE IN:

5g, 9g, 13g, 36g, 90g, 180g, 270g, 450g, 700g, 1.08kg, 1.8kg, 3.6kg, 5.4kg, 9kg



The high bond strength adhesive for a wide variety of substrates.

APPLICATION AREAS



Door & Window framing



Kitchen platform



Staircases & Metal Railings



Vertical cladding of Stones



Wooden furniture



Industries like sports goods, speakers etc.

TILE & STONE EPOXY ADHESIVE RANGE

Araldite Klear 5

Kwik bhi, Klear bhi

Araldite® Klear 5 is a two-component, rapid curing transparent epoxy adhesive used to bond a variety of substrates.

It is suitable for bonding a wide variety of Glass, metals, Stone, Wood, Ceramic, Rubber, Dry Concrete, Asbestos, Cement & Bison board, Fabric, Leather & most rigid Plastics.

FEATURES

- 5 Mins Fast Setting
- Transparent glue line
- Compatible with Multiple Substrates
- Odourless

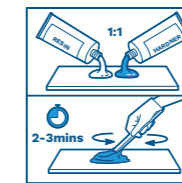
MORE DETAILS

- Bond Strength of Klear 5 with - Metals - 112 kg/cm² - Glass - 71 kg/cm²
- Load Bearing Capacity - 357 kg
- Pot life - 2 to 3 Mins
- Mixing Ratio by volume 1 : 1

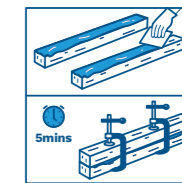
HOW TO APPLY



Roughen, degrease & dry surfaces to be bonded



Mix equal volume of Resin & Hardener; Use the mix within 2 to 3 minutes



Apply a thin layer on both surfaces and clamp joint for 5 minutes



AVAILABLE IN:

5g, 10g, 26g, 90g, 180g, 270g, 450g, 1.08kg



Fast & Clear epoxy for application on a wide variety of substrates

APPLICATION AREAS



Edge banding of kitchen platforms



Shelves



Artificial jewellery



Name plates on walls

TILE & STONE EPOXY ADHESIVE RANGE

Araldite Klear 20

Na sookhne ka darr, lagaiye befikar

Araldite® Klear 20 is a Fast & Clear Epoxy for application on larger surface areas.

It is suitable for bonding a variety of substrates like Glass, Stone, Wood, Metal, Ceramic, Rubber, Dry Concrete, Asbestos, Cement & Bison board, Fabric, Leather & most rigid Plastics.

FEATURES

- Ideal Pot life of 10 to 15 minutes giving the user enough time to work on medium to large surfaces.
- Setting time of 20 mins leading to time saving and faster completion of work
- High Clarity
- Multi-Substrate
- High bond strength

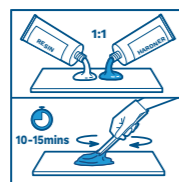
MORE DETAILS

- Bond Strength (LSS) - > 100 kg/ sq.cm
- Load bearing Capacity - 290-300 kg
- Pot life - 10 to 15 Mins
- Coverage - 100 to 110 sq.ft /1.8 kg set (with 0.4 to 0.5mm Adhesive thickness)
- Mixing Ratio by vol. 1 : 1

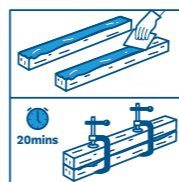
HOW TO APPLY



Roughen, degrease & dry surfaces to be bonded



Mix equal Volume of Resin & Hardener; Use the mix within 10 to 15 minutes



Apply a thin layer on both surfaces and clamp joint for 20 minutes



AVAILABLE IN:
90g, 180g, 250g, 450g, 1kg, 2kg



Fast & Clear Epoxy for application on larger surface areas

APPLICATION AREAS



Kitchen Platform



Marble Shelves



Glass Furniture



Staircase

TILE & STONE EPOXY ADHESIVE RANGE

Araldite Klear 120

Crystal clear for years to come

Araldite® Klear 120 is a transparent epoxy adhesive suited for bigger bonding applications that demand good clarity & aesthetics. It is suitable for bonding a wide variety of substrates like Glass, Stone, Wood, Metal, Ceramic, Rubber, Dry Concrete, Asbestos, Cement & Bison board, Fabric, Leather & most rigid Plastics.

FEATURES

- Crystal Clear
- Adequate handling time of 30 to 35 Mins for large applications
- High UV Resistance
- Odourless

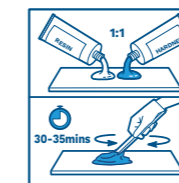
MORE DETAILS

- Bond Strength of 142 kg/sq.cm
- Load Bearing Capacity - 437 kg after 24 hrs
- Pot life - 30 to 35 Mins
- Setting Time - 2 hrs
- Coverage - 100 to 110 sq.ft / 1.8 kg set (0.4 to 0.5 mm adhesive thickness)
- Mixing Ratio by volume 1 : 1

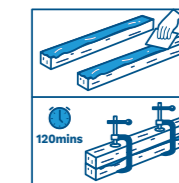
HOW TO APPLY



Roughen, degrease & dry surfaces to be bonded



Mix equal Volume of Resin & Hardener; Use the mix within 30 to 35 minutes



Apply a thin layer on both surfaces and clamp joint for 120 minutes



AVAILABLE IN:
180g, 450g, 1.8kg



Clear epoxy for applications requiring best-in-class clarity on large substrates.

APPLICATION AREAS



Large glass furniture



Large white marble fixtures



Glass Panels



Glass Fitouts

TILE & STONE EPOXY ADHESIVE RANGE

Araldite KLAD X

Jaldi se mazboot jod

Araldite Klad X is a two-component fast setting epoxy adhesive that can not only be used for spot bonding purposes but also is good in underwater curing.

FEATURES

- Easy to apply through Spot Bonding
- Fast Setting within 30 to 40 mins allowing quick removal of support
- 10X stronger than concrete
- Underwater curing
- Can be used for Anchoring

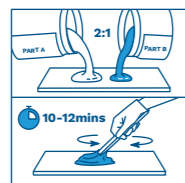
MORE DETAILS

- Bond Strength (LSS) - > 100 kg/ sq.cm
- Compatible with Multiple Substrates
- Load bearing Capacity - 750 kg
- Pot life - 10 to 12 Mins
- Coverage - 100 sq. ft./1.5 kg set in spot bonding covering with blobs of 3 mm thickness.- 9 to 10 Sq. ft. with bed thickness of 1 mm.
- Mixing Ratio by volume of Resin & Hardener is 2 : 1

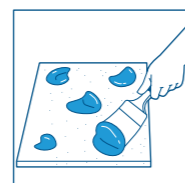
HOW TO APPLY



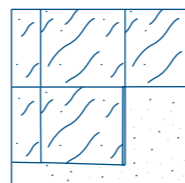
Ensure that the marble / granite slab and wall are smooth, even and dust free



Mix Part A and B in 2:1 ratio by volume and use within 10 to 12 minutes



Apply a thick blob of the mixture on all the corners and the centre or apply a thin layer evenly on the entire surface of the slab



Stick the slab to the dry surface and provide support for 30 to 40 minutes



AVAILABLE IN: 300 g, 1.5 kg



Fast-setting adhesive for heavy duty stone cladding using spot bonding

APPLICATION AREAS



Wet Area Cladding



Fixing Stone on wall



Anchoring



Kitchen Sink Fixing



Dry Cladding



Window Framing

TILE & STONE EPOXY ADHESIVE RANGE

Araldite KLAD PRO

Stone Cladding ka Pro

A high-performance, multipurpose, adhesive for fixing all types of tiles & stones including composites, engineered/ nano stones, metal & glass tiles on interior and exterior floor & wall.

FEATURES

- Multi-Substrate
- High Flexibility
- High Open Time
- Ideal for light coloured stones

MORE DETAILS

- Suitable for High Vibration Areas
- Used on Internal and External Areas
- PU Epoxy Hybrid adhesive
- Low VOC
- Coverage:
 - 16 - 20 sq. ft/ 4 kg pack - 1.5 mm bed thickness (using 3 mm x 3 mm notch).
 - 8 - 10 sq. ft/ 4 kg pack - 3 mm bed thickness (using 6 mm x 6 mm notch).

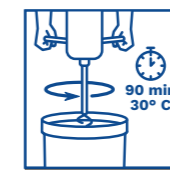
HOW TO APPLY



The substrate should be sound & thoroughly cleaned & free from loose particles, wax, grease, moss, polish etc.



Mix Hardener (B) thoroughly with Base (A) already present in the Pail as per preset ratio



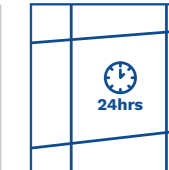
Always mix a required quantity which can be consumed within 90 minutes pot life at 30°C



Spread the adhesive to a required bed thickness & comb it with a notch trowel



Apply the adhesive paste which can be applied within 60 minutes (at 30°C). Apply firm pressure to ensure better coverage on the back of the stones



Allow the stone to set for 24 hours



AVAILABLE IN: 4 kg



PU Epoxy Hybrid technology-based, adhesive that is flexible and can be used on multiple substrates with high undulations

APPLICATION AREAS



Metal Cladding



Stone Cladding



TV Units



Home Interiors



COMPLETE
STONE
SOLUTIONS

BACK SEALER

Tenax Anti-Efflorescence

For protecting the porous and absorbent surface against the rise of ferrous salts and other contaminants which may arise from the back of the stone and might result in formation of white patches on the top.

FEATURES

- Water-based alkaline product
- Maintains breathability of the stone
- Penetrating sealer (No film formation)



PACKAGING UNITS

1 Ltr

COLOUR

White

SHELF LIFE

24 months

Stoneguard WB

Water based penetrating sealer for porous & non-porous stones. It is transparent in nature & protects the stone with advanced penetrating microbond technology.

FEATURES

- Non-staining
- Water and oil resistant
- Maintains the natural look of stone



PACKAGING UNITS

1 Ltr 5 Ltr

COLOUR

Clear

SHELF LIFE

24 months

GENERAL MASTICS COLORED

Tenax Solido & Liquido (White & Ivory)

For gluing and filling the cracks & gaps of marbles and other stones. It comes in two variants:

- Liquid variant is a liquid glue with good viscosity, recommended for horizontal applications.
- Solid variant is a thixotropic glue with high viscosity, recommended for vertical application.

FEATURES

- Polishable and grindable in a very short time
- Low shrinkage property
- Good adhesion



PACKAGING UNITS

250 g 500 g 1.35 kg

COLOUR

White, Ivory

SHELF LIFE

12 months

*Coverage varies with stone type/ porosity & size.

GENERAL MASTICS TRANSPARENT

Tenax Solido Transparente

For gluing and filling the cracks & gaps between marbles, onyx and other stones. It is thixotropic glue with high viscosity, recommended for vertical as well as horizontal application.

FEATURES

- Polishable and grindable in a very short time
- Low shrinkage property
- Good adhesion



PACKAGING UNITS

1 kg

COLOUR

Transparent

SHELF LIFE

12 months

Tenax Thassos - Tropical

For gluing and filling cracks and gaps between the white marble family and similar stones like Thassos and Carrara.

FEATURES

- High thixotropic glue with high viscosity
- Easy to stir and spread
- Good adhesion



PACKAGING UNITS

1 kg

COLOUR

Transparent

SHELF LIFE

12 months

Tenax Resina T8

For gluing and filling cracks & gaps in marbles & stones like Carrara and similar stones. Ideal for filling travertines and similar types of stones for achieving a transparent effect.

FEATURES

- Extra clear liquid resin with low viscosity
- Very low shrinkage
- Stable performance in sunlight



PACKAGING UNITS

1 Ltr

COLOUR

Transparent

SHELF LIFE

6 months

*Coverage varies with stone type/ porosity & size.

PREMIUM EPOXY MASTIC

Tenax Elix

Extra clear thixotropic paste for gluing and filling cracks & gaps of marble, stone, granite, quartz, ceramics & other premium stones.

FEATURES

- Non-toxic to long term usage on marbles
- Easy to spread
- Excellent adhesion
- Very low yellowing
- Suitable for outdoor and indoor applications



PACKAGING UNITS

15 kg 2.25 kg

COLOUR

Extra Clear/
Whitish

SHELF LIFE

24 months

COLORANTS

Tenax Universal Colour

A colouring paste for all the polyester, epoxy mastics and systems to match the colour of stone.

FEATURES

- Soft paste available in multiple shades
- Easy to mix
- Universal colouring



PACKAGING UNITS

75 g

COLOUR

Multiple Colours/
Shades

SHELF LIFE

24 months

Tenax Magic Tint

A colouring paste for all the polyester, epoxy mastics and systems to match the colour of stone.

FEATURES

- Viscous liquid available in multiple shades
- Easy to mix
- Universal colouring



PACKAGING UNITS

50 g

COLOUR

Multiple Colours/
Shades

SHELF LIFE

24 months

*Coverage varies with stone type/ porosity & size.

EPOXY RESIN

Tenax StoneFill

Liquid epoxy resin coat for corner to corner applications, which penetrates into the stone & gives adhesion and strength to the installed stone. The product comes in various variants:

- **Xtra-Clear** : For white and premium marbles
- **Universal** : For light and dark coloured marbles
- **Rapid** : For renovation or same day polishing requirements

FEATURES

- Enhances strength of the stone
- Imparts wet look to the stone
- Easy to spread
- Weather resistant



GRADE

MIXING RATIO (PART A: PART B)

AREA OF APPLICATION

Xtra-Clear	100:30 (3:1)	For white & premium marbles
Universal	100:50 (2:1)	For light/ dark coloured marbles
Rapid	100:25 (4:1)	Same day polishing / fast work

PACKAGING UNITS

1.25 kg

COLOUR

-

SHELF LIFE

24 months

TRANSPARENT RESIN

Tenax Resina 101

Polyester resin for filling travertines and similar types of stones for achieving a transparent effect. It is also used for gluing and filling cracks & gaps in marbles & stones.

FEATURES

- Extra clear liquid resin with low viscosity
- Very low shrinkage
- Stable performance in sunlight
- Minimum reaction temperature 5°C



PACKAGING UNITS

1 kg

COLOUR

Transparent

SHELF LIFE

6 months

*Coverage varies with stone type/ porosity & size.

DENSIFIER

Tenax Durastone 200 & 800

For the treatment of soft marble, natural stone, limestone etc. and making the stone surface stronger. It makes marble or stone resistant to water, stains and abrasion which results in easier maintenance and imparts longer life.

FEATURES

- Low viscosity for deeper penetration
- Resists stains & abrasion
- Improves polishing effect



PACKAGING UNITS	COLOUR	SHELF LIFE
1 Ltr 5 Ltr 20 Ltr	Colourless liquid	24 months

POLISH/ POWDER POLISH

Tenax Marvel Shine Pro

Marble and stone polishing powder to increase the gloss of the marble, and hence provide a long lasting shine.

FEATURES

- Mirror polish
- Anti-slip properties
- Long lasting shine



PACKAGING UNITS	COLOUR	SHELF LIFE
1 kg	White fine powder	4 years

Tenax Cera Fluida

For providing instant shine to the stone. Recommended to be used immediately after completion of polishing process on stones.

FEATURES

- Concentrated wax liquid that provides instant gloss
- Suitable for indoor and outdoor applications



PACKAGING UNITS	COLOUR	SHELF LIFE
1 Ltr 250 ml	Milky White	24 months

*Coverage varies with stone type/ porosity & size.

TOP SEALER

Tenax Skudo Universal Plus

A water-based, oil and waterproof sealer. It penetrates deeper into the micro-porosities & prevents liquids from penetrating, thus providing anti-stain properties. It is permeable to vapours and promotes breathability of the stone.

FEATURES

- Promotes natural look of the stone
- Food grade approved
- Non-reactive to all types of stones
- Suitable for indoor & outdoor applications



PACKAGING UNITS	COLOUR	SHELF LIFE
1 Ltr	Colourless	24 months

Tenax Proseal

Solvent-based oil proof and waterproof penetrating sealer for protecting granite marble, limestone, sandstone and terracotta. Generally recommended for quartz-based materials and materials with mixed presence of silicates and carbonates.

FEATURES

- Deep penetrating sealer
- Advanced technology to repel oil and water
- Suitable for indoor & outdoor applications



PACKAGING UNITS	COLOUR	SHELF LIFE
1 Ltr 250 ml	Colourless	24 months

Tenax Hydrex

An anti-stain sealer which blocks micro-porosities and hence prevents liquids from penetrating inside stone. It protects against water-based stains.

FEATURES

- Maintains natural look of the stone
- Permeable to vapours and lets the stone to breathe
- Suitable for indoor & outdoor applications



PACKAGING UNITS	COLOUR	SHELF LIFE
1 Ltr	Colourless	24 months

*Coverage varies with stone type/ porosity & size.

TOP SEALER + ENHANCER

Tenax Ager

For enhancing colour, giving a wet look on stones and protecting from oil & water-based stains. Suitable for surfaces which are polished, honed, sanded, brushed, flamed or rough.

FEATURES

- Sealer cum colour enhancer
- Gives an anti-graffiti (anti-scratch) effect
- Oil and Water Resistant
- Suitable for indoor and outdoor applications



PACKAGING UNITS

1 Ltr 250 ml

COLOUR

Colourless

SHELF LIFE

24 months

Tenax Easywet

An anti-aging sealer for all types of marbles, travertines, stones, granites and agglomerates to obtain a wet effect for indoor applications.

FEATURES

- Sealer cum colour enhancer
- Quick drying
- No film formation



PACKAGING UNITS

1 Ltr

COLOUR

Transparent

SHELF LIFE

24 months

CLEANER

Tenax Brio Top

For quick and easy cleaning of marble, granite, engineered stone, countertops, vanity tops and all other solid surfaces.

FEATURES

- Alcohol-based cleaner
- Formulated for everyday use
- Can be used without rinsing
- Does not leave marks
- Quick drying



PACKAGING UNITS

1 Ltr

COLOUR

Transparent

SHELF LIFE

24 months

*Coverage varies with stone type/ porosity & size.

CLEANER

Tenax Bravo Sgrassatore

Removes greasy, synthetic & extraordinary organic stains/ dirt like - oil, fats, soap, paint, varnish, ink etc. from acid sensitive stones - like non-glossy marble, limestone etc.

FEATURES

- Concentrated product to be diluted in water
- Water base
- Ordinary and extraordinary maintenance
- Alkaline nature



PACKAGING UNITS

1 Ltr

COLOUR

Orange Liquid

SHELF LIFE

24 months

Tenax Bravo Disincrostante

Concentrated detergent, suitable for the removal of dirt from the building site such as joint residues, rust, traces of wall paintings, mineral deposits, saltpetre and inorganic stains.

FEATURES

- Concentrated product to be diluted in water
- Water base
- Ordinary and extraordinary maintenance
- Acidic nature & ideal for outdoor application



PACKAGING UNITS

1 Ltr

COLOUR

Red Liquid

SHELF LIFE

24 months

*Coverage varies with stone type/ porosity & size.

LIST OF SOME LANDMARK PROJECTS

Reliance Refinery - Jamnagar



Brigade - Hyderabad



HDFC Bank House - Kolkata



Aparna - Hyderabad



Lodha - Mumbai



Vice President Enclave - Delhi NCR



Raheja Altimus - Mumbai



Telangana Secretariat - Hyderabad



Airports - Bengaluru, Surat, Goa, Lucknow



IIT Jammu - Jammu



IIT Delhi - Delhi NCR



Govt Housing, Hulhumali - Male (Maldives)



LIST OF SOME LANDMARK PROJECTS

COMMERCIAL PROJECTS

Sr. No.	Project Name	City
1	ITC	Bengaluru
2	Wells Fargo	Bengaluru
3	DP World	Chennai
4	Olympia Cyberspace	Chennai
5	Ramanujam IT Park	Chennai
6	Zenith	Chennai
7	ZOHO Corp	Chennai
8	Ashoka University	Delhi NCR
9	DLF AMEX	Delhi NCR
10	Lemon Tree Hotel	Delhi NCR
11	NPX Mall	Delhi NCR
12	Sheraton Hotel	Delhi NCR
13	EMAAR	Hyderabad
14	Google	Hyderabad
15	Mahindra University	Hyderabad

DEVELOPERS PROJECTS

Sr. No.	Project Name	City
1	Adani Archway	Ahmedabad
2	Adani Shantigram	Ahmedabad
3	Embassy Group	Bengaluru
4	Purvankara	Bengaluru
5	Baashyam	Chennai
6	ABA Corp	Delhi NCR
7	Gaursons	Delhi NCR
8	Tata Projects	Delhi NCR
9	Birla Group	Mumbai
10	Kalpataru	Mumbai

GOVERNMENT PROJECTS

Sr. No.	Project Name	City
1	SOA University	Bhubaneshwar
2	AAI Residences	Chennai
3	Kalaignar Memorial	Chennai
4	Kings Institute	Chennai
5	Bhikshu Hospital	Delhi NCR
6	DDA Narela	Delhi NCR
7	DRDO Residential	Delhi NCR
8	IG Airport T-3 Tunnels	Delhi NCR
9	MP Flats, DDU Marg	Delhi NCR
10	AIIMS	Deoghar
11	Hamirpur Medical College	Hamirpur
12	Mahipal University	Jaipur
13	Government Hospital	Jwalapuri, Sirsapur, Kanpur, Auraiya, Lalitpur
14	BARC	Mumbai
15	JIPMER Medical Campus	Puducherry



Pidilite

Pidilite Industries Limited

Construction Chemicals Division

Ramakrishna Mandir Road, PO Box No. 17411,

Andheri East, Mumbai 400 059

T (022) 2835 7000 E info@roff.in

W www.roff.in

Call Roff Advice Centre **1800 22 5502**



Scan to download
Star Champs App

DISCLAIMER The product information & application details given by the company & its agents has been provided in good faith & meant to serve only as a general guideline during usage. Users are advised to carry out tests & take trials to ensure on the suitability of products meeting their requirement prior to full scale usage of our products. Since the correct identification of the problems, quality of other materials used and on-site workmanship are factors beyond our control, there are no expressed or implied guarantee/ warranty as to the results obtained. The Company does not assume any liability or any consequential damage for unsatisfactory results, arising from the use of our products.

25CC0380-IRF-ARTCTLG-ENG-FEB

